



DISNEY'S BOARDWALK INN



# PROMOTING YOUR BRAND

— 2018 BRANDING & SPONSORSHIP OPPORTUNITIES AT DISNEY'S BOARDWALK INN —



# PROMOTE YOUR BRAND

Increase the visibility of your organization’s brand throughout your event through a wide variety of sign and imaging options. Disney Event Group can also help you create opportunities for potential sponsors at a wide range of exposure.

## CONTENTS

### PRE-EVENT BRANDING

Brand Your Meeting .....	3
Pre-Event Announcements .....	7

### EVENT BRANDING

On-Screen Communication .....	9
Print Collateral .....	12
Photography .....	14
Photography Experience .....	19
Photo Delivery Options.....	21
Photo Borders.....	22
Photography Enhancements .....	23
Photography Backdrop .....	24
Event Enhancements.....	26
Charging Stations .....	29
Charging Furniture .....	30
Engagement Tools.....	36
Event Documentation .....	39

### EVENT BRANDING AND SIGNAGE

Portable Signage .....	42
Resort-Specific Signage .....	51



## PRE-EVENT BRANDING

### BRAND YOUR MEETING

#### BRANDING PACKAGE

Brand your meeting with this cost-effective bundle that includes the three items below:

**Package Price: \$3,200**



Standard **Themed Event Icon**



Themed **PowerPoint or Keynote template**



Standard **Animated Screen Warmer** (animated version of the event icon)



#### EXPERT TIP

See the following pages for opportunities for leveraging your Themed Event Icon!

Credentials priced separately



+ INDICATES SALES TAX (CURRENTLY 6.5%).  
PRICING AND TAXES ARE SUBJECT TO CHANGE WITHOUT NOTICE.

FOR MORE INFORMATION, CONTACT YOUR DISNEY REPRESENTATIVE.

## PRE-EVENT BRANDING

### BRAND YOUR MEETING

#### THEMED EVENT ICON

Our Disney designers will collaborate with you to create a custom icon that supports your meeting theme and helps “brand” your meeting. We offer three levels of design.

**Standard:** Includes three (3) initial design concepts and up to two (2) rounds of edits to produce the final design. Standard icons are more simplistic in design.

**\$2,600**



STANDARD

**Enhanced:** Includes five (5) initial design concepts and up to three (3) rounds of edits to produce the final design. Enhanced icons may be more dimensional.

**\$3,200**



ENHANCED

**Complex:** Includes eight (8) initial design concepts and up to five (5) rounds of edits to produce the final design. Complex icons may be more dimensional and/or textured.

**See your Disney Representative for a custom quote.**



COMPLEX

*If Stock Art elements are used in the design, they will be licensed to your organization so that the design may be used in other materials produced by your team.*

**+ INDICATES SALES TAX (CURRENTLY 6.5%).**

**PRICING AND TAXES ARE SUBJECT TO CHANGE WITHOUT NOTICE.**

**FOR MORE INFORMATION, CONTACT YOUR DISNEY REPRESENTATIVE.**



### BRAND YOUR MEETING

#### ANIMATED SCREEN WARMER

We'll collaborate with you to build a looping video with full motion graphics utilizing your organization's logo or event theme and icon. These 15-30 second video loops can be used for walk-in, during breaks, and other transitional moments during your event.

[Click here to view examples:](#)



**Standard:** Your logo or event icon is enhanced with subtle shimmer and movement effects.  
**\$950**

**Enhanced:** Your logo or event icon is animated with increased motion and enhancements such as dimensional effects, build-in of elements, and multiple camera angles.  
**\$2,600**

**Complex:** We will work with you to build a truly customized screenwarmer based on your logo or event icon, featuring dynamic, eye-popping graphics and special effects.  
**See your Disney Representative for a custom quote.**

+ INDICATES SALES TAX (CURRENTLY 6.5%).  
PRICING AND TAXES ARE SUBJECT TO CHANGE WITHOUT NOTICE.

FOR MORE INFORMATION, CONTACT YOUR DISNEY REPRESENTATIVE.

## PRE-EVENT BRANDING

### BRAND YOUR MEETING

#### THEMED POWERPOINT/KEYNOTE TEMPLATE

We will create a custom template themed to your event. The template will contain title, text and graphic slides.

**\$750**



Presentation Design services are also available.

*If Stock Art elements are used in the design, they will be licensed to your organization so that the design may be used in other materials produced by your team.*

+ INDICATES SALES TAX (CURRENTLY 6.5%).  
PRICING AND TAXES ARE SUBJECT TO CHANGE WITHOUT NOTICE.

FOR MORE INFORMATION, CONTACT YOUR DISNEY REPRESENTATIVE.

## PRE-EVENT BRANDING

### PRE-EVENT ANNOUNCEMENTS

#### SAVE-THE-DATE STATIC GRAPHIC

Generate excitement and create a buzz about your upcoming event.

Includes a themed graphic embedded in an email message to your prospective attendees. Clicking on the graphic opens the viewer's Internet browser and links them to your website or registration page.

**\$1,500** – Production time: 1 week

[Click here to view examples.](#)



#### SAVE-THE-DATE MOTION GRAPHIC

Clicking on an embedded email graphic opens the viewer's Internet browser and plays a high-energy motion graphics video with music and sound effects. The video is up to 60 seconds in duration, and is designed to complement your meeting theme and deliver your key pre-event messages.

**\$6,000** – Production Time: 2 – 3 weeks

[Click here to view examples.](#)

+ INDICATES SALES TAX (CURRENTLY 6.5%).

PRICING AND TAXES ARE SUBJECT TO CHANGE WITHOUT NOTICE.

FOR MORE INFORMATION, CONTACT YOUR DISNEY REPRESENTATIVE.

## PRE-EVENT BRANDING

### PRE-EVENT ANNOUNCEMENTS

#### ANNOUNCEMENT VIDEO

[Click here to view examples.](#)



**Standard** *Walt Disney World® Resort* – Announce your upcoming meeting at the *Walt Disney World® Resort* with this budget-friendly, pre-produced Announcement Video that highlights the many exciting things your attendees may enjoy during their visit. Price includes a customized ending graphic that displays the event name and year in fireworks above Cinderella Castle.\*

Approximate Length 1:30

**\$2,000** – Production Time: 1 week

**Enhanced** *Walt Disney World® Resort* – This video is a great choice when you want to announce to your group that their next big gathering will take place at the *Walt Disney World® Resort*. Enhance the above Standard Video by adding a Google Earth Zoom Effect to travel from your current meeting location to the *Walt Disney World® Resort*. Plus, add specific Disney Resort footage and a closing slide that delivers specific Save the Date messaging.\*

Approximate Length 2:00 minutes

**\$3,000** – Production Time: 2 weeks

**Custom** *Walt Disney World® Resort* – We will work hand-in-hand with your meeting team to create a video announcement specific to your group and its needs. Let our video experts help you craft an exciting, customized message that highlights the themes, goals and incentives that are important to you. Options range from customized scripting and voice-overs to special video shoots involving magical Disney Character appearances and your leaders, shot within the *Walt Disney World®* theme parks and resorts.\*

**Starting at \$5,000** – Production Time: 2 – 4 weeks

\*Disney will deliver the Announcement Video content to the client. Client shall be responsible for distribution. Please note that the Disney copyrighted content in this video has not been cleared for distribution outside of client's organization.

If Stock Art elements are used in the design, they will be licensed to your organization so that the design may be used in other materials produced by your team.

**+ INDICATES SALES TAX (CURRENTLY 6.5%).**

**PRICING AND TAXES ARE SUBJECT TO CHANGE WITHOUT NOTICE.**

**FOR MORE INFORMATION, CONTACT YOUR DISNEY REPRESENTATIVE.**



## ON-SCREEN COMMUNICATION

### POWER LOGO OPENER

[Click here to view examples.](#)



Kick off your meeting and inspire pride in your attendees with a high-energy animated reveal of your organization's logo. This creative opening video delivers a big impact without a big cost, and with little planning on your part. Using motion graphics, sound effects and driving music, we create a high-impact 45-60 second "Opener" that morphs from your event icon into your logo. As the opener ends, your logo lands dramatically in the center of the screen. The final effects reverberate around the room and your executive enters with the huge on-screen logo as the backdrop for his/her welcoming remarks.

- Starts with your themed event icon (client-provided)
- Ends dramatically on your company logo (client-provided)
- We create the energy and dynamic imagery in-between

**\$6,000** (\$5,500 if bundled with the Branding Package)

+ INDICATES SALES TAX (CURRENTLY 6.5%).  
PRICING AND TAXES ARE SUBJECT TO CHANGE WITHOUT NOTICE.

FOR MORE INFORMATION, CONTACT YOUR DISNEY REPRESENTATIVE.

### ON-SCREEN COMMUNICATION

#### HAND-SKETCHED ANIMATION VIDEO



Looking for an original and fun way to reach your audience? Let Disney help tell your story with our Hand-Sketched Animation Videos. These videos incorporate the rich tradition of Disney storyboarding and animation to deliver your message in an easy-to-understand, visual way. They can increase retention by simplifying complex processes. They can be used to tell a story, provide a testimonial, or as a pre-event email blast to promote your upcoming meeting. Pricing is based on a 60-second video and includes script support, storyboards, professional narration, music from our licensed library and sound effects.

**Price: \$3,500**

Each additional minute: \$950

+ INDICATES SALES TAX (CURRENTLY 6.5%).

PRICING AND TAXES ARE SUBJECT TO CHANGE WITHOUT NOTICE.

FOR MORE INFORMATION, CONTACT YOUR DISNEY REPRESENTATIVE.

### ON-SCREEN COMMUNICATION

#### BRANDED AWARDS PACKAGE

Celebrate your top achievers with an awards package customized for your needs and brand. We start by designing your awards theme. We'll work closely with you to identify your awards event's character and personality to correctly align the design with your organization's identity or, if you'd prefer, we can create something totally unique and different. Once your Awards title has been translated into a beautiful graphic representation we'll use it as the foundation for the design of your screenwarmer and presentation.

##### Package includes:

- A designed Award text/graphic/icon treatment
- A screenwarmer loop (your awards graphic with animated highlights and gleams)
- Themed awards presentation (PowerPoint or Keynote)

**Package price: \$3,200**

##### Enhancements to this package include:

- A Virtual Awards Environment – **\$6,000**

For events that have a wide-screen AV Package, we can create a graphic environment that has all of the realism and dimension of a traditional three-dimensional set but with a significant cost savings advantage. Includes three (3) subtle animated effects.



- Step and Repeat Photo Backdrop – **\$1,840**
- Posters, Floor Graphics and Banners – Please consult with your Disney Event Representative to discuss pricing for these enhancements.

+ INDICATES SALES TAX (CURRENTLY 6.5%).  
PRICING AND TAXES ARE SUBJECT TO CHANGE WITHOUT NOTICE.

FOR MORE INFORMATION, CONTACT YOUR DISNEY REPRESENTATIVE.



# EVENT BRANDING

## PRINT COLLATERAL

### CREDENTIALS

Provide your attendees with a themed event credential. These are up to 3.5" x 5.5" and may be personalized with the attendee's information (e.g. name, title, etc.) on the front and agenda on the back, complete with a sponsor's logo or message. Comes with a black, .75" break-away lanyard.\*

**\$2,000** – Up to 100 Credentials (includes design and printing)

**\$7.00** each for additional credentials - volume discounts available for quantities over 750.

\* Upgrade to a custom one-color imprint lanyard available for an additional \$1 each.



### CUSTOM EVENT MAPS

Our custom event maps make it easy for your guests to navigate your special event in the Park while reinforcing your brand or event sponsor. They include an event schedule, locations of available attractions and locations of guest amenities. Maps are single-sided, 8.5" x 11", includes up to 2 revision cycles.

**\$1,550** – Qty. 200 Maps (includes design and printing)

**\$1.50** each for additional maps\*

\* Discounted pricing available for larger (1000+) quantities.



+ INDICATES SALES TAX (CURRENTLY 6.5%).

PRICING AND TAXES ARE SUBJECT TO CHANGE WITHOUT NOTICE.

FOR MORE INFORMATION, CONTACT YOUR DISNEY REPRESENTATIVE.



## PRINT COLLATERAL

### LOGOVISION GLASSES (WITH CUSTOM LOGO LENSES AND FRAMES)

See your brand everywhere and even turn our elaborate Disney fireworks display into a custom branded experience for your guests. These magical glasses turn every bright point of light into your illuminated logo or name.\*

The printed frames are a great opportunity to recognize sponsors or deliver additional printed messaging.

**Qty. 500 – \$9.42 each**

**Qty. 800 – \$5.90 each**

**Qty. 1,000 – \$4.71 each**

**Qty. 1,500 – \$3.42 each**

**Qty. 2,000 – \$2.96 each**

**Qty. 2,500 – \$2.53 each**



\* Custom LogoVision lens is limited to eight (8) characters or a simple logo symbol. Contact your event consultant for more information.

Please allow a minimum of four (4) weeks to produce LogoVision with Custom Logo Lenses.



#### EXPERT TIP

LogoVision glasses are a great idea for a giveaway at your tradeshow or exhibit - Disney Event Group can also assist with providing an ideal light source for viewing at your booth.

+ INDICATES SALES TAX (CURRENTLY 6.5%).

**PRICING AND TAXES ARE SUBJECT TO CHANGE WITHOUT NOTICE.**

**FOR MORE INFORMATION, CONTACT YOUR DISNEY REPRESENTATIVE.**

## PHOTOGRAPHY

### CANDID DOCUMENTATION PACKAGE

Capture speakers, candid, and general event coverage. This package is intended for documentation purposes only, and is **not intended for Character meet and greets.**

#### Package includes:

- Photographer
- Microsite with unlimited downloads, or USB drive

#### Best for:

- Candid shots
- Up to 30 people informal group shot

#### Prices starting at:

- 1 hour - **\$300**
- 2 hours - **\$400**
- 3 hours - **\$500**
- 4 hours - **\$600**

*Rush fee for delivery within same day to 12 hours- **\$200***

*Rush fee for delivery within 48 hours- **\$100***

*Confirmed photography cancelled less than seven (7) days out will be assessed a **50% cancellation fee***

*Confirmed photography cancelled less than 72 hours out will be assessed a **100% cancellation fee***



**FOR ADDITIONAL ENHANCEMENTS  
PLEASE CLICK HERE**

**+ INDICATES SALES TAX (CURRENTLY 6.5%).  
PRICING AND TAXES ARE SUBJECT TO CHANGE WITHOUT NOTICE.**

**FOR MORE INFORMATION, CONTACT YOUR DISNEY REPRESENTATIVE.**

## PHOTOGRAPHY

### ON-LOCATION STUDIO PACKAGE

Disney's On-Location Studio offers you a variety of options when it comes to the planned photographs you want to capture.

Whether you are looking for arrival photos, awards night "step and repeat," group shots, individual pictures, or Character photos, Disney's On-Location Studio has you covered.

#### Package includes:

- Photographer and Assistant
- Professional lighting
- Microsite with unlimited downloads, or USB drive
- *Standard backdrops*

#### Prices starting at:

- 1 hour - **\$450**
- 2 hours - **\$550**
- 3 hours - **\$650**
- 4 hours - **\$850**
- On Location Studio Package with Candid Documentation (up to 2 hours) - **\$575**
- On Location Studio Package with Green Screen (up to 2 hours) - **\$650**
- Add Disney PhotoPass® service with unlimited downloads - **\$399**

#### Best for:

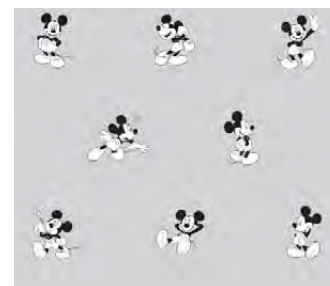
- Professional headshots
- Formal group shot (up to 30 people)
- Use with a custom step and repeat backdrop or the Mickey Step and Repeat (as shown)
- Character experience with appropriate character backdrop (provided by Entertainment)
- **Not for use outdoors**

Rush fee for delivery within same day to 12 hours- **\$200**

Rush fee for delivery within 48 hours- **\$100**

Confirmed photography cancelled less than seven (7) days out will be assessed a **50% cancellation fee**

Confirmed photography cancelled less than 72 hours out will be assessed a **100% cancellation fee**

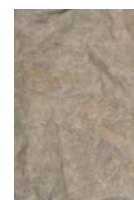


**Mickey Step and Repeat Backdrop**

- Not Available for use with Disney Characters -



**Blue**



**Gray**



**Old Master**

FOR STANDARD BORDER OPTIONS  
PLEASE CLICK HERE

FOR ADDITIONAL ENHANCEMENTS  
PLEASE CLICK HERE

+ INDICATES SALES TAX (CURRENTLY 6.5%).

**PRICING AND TAXES ARE SUBJECT TO CHANGE WITHOUT NOTICE.**

**FOR MORE INFORMATION, CONTACT YOUR DISNEY REPRESENTATIVE.**



## PHOTOGRAPHY

### SOCIAL MEDIA PACKAGE

Capture fun images with our tablet-based camera system designed to engage your attendees. Once the photo is captured, it will be emailed immediately to the attendee to share on social media. **Not intended for Character meet and greets.**

#### Package includes:

- Photographer
- Equipment (tablet)
- Graphic border (standard)

#### Prices starting at:

- 2 hours - **\$290**
- 3 hours - **\$340**
- 4 hours - **\$390**

Add a customized border with your company logo and your event theme - **\$200**

To add all images taken at the event to the microsite 48 hours after the event - **\$200**

Confirmed photography cancelled less than seven (7) days out will be assessed a **50% cancellation fee**

Confirmed photography cancelled less than 72 hours out will be assessed a **100% cancellation fee**



FOR STANDARD BORDER OPTIONS  
PLEASE [CLICK HERE](#)

+ INDICATES SALES TAX (CURRENTLY 6.5%).  
PRICING AND TAXES ARE SUBJECT TO CHANGE WITHOUT NOTICE.

FOR MORE INFORMATION, CONTACT YOUR DISNEY REPRESENTATIVE.



## PHOTOGRAPHY

### GROUP PHOTO PACKAGE

Create an event keepsake with a Group Photo. We can coordinate a unique pose with pre-planning.

#### Package includes:

- Photographer and Assistant
- High resolution group photo
- Professional lighting/risers
- Graphic border (standard)
- Microsite with unlimited downloads, or USB drive

1 hour experience for up to 200 people - **\$450**

1 hour experience for 201-400 people (includes lift) - **\$750**

*Please discuss location with your Disney Representative to determine the optimum spacing and set-up for your group photo. For groups over 400, pricing available upon request.*

#### Limited Availability: Magic Kingdom East Lawn Plaza

This is a special opportunity with very limited availability due to park operating requirements and equipment needed.

- Approval needed from Park Event Operations
- Please call Disney Fine Art Photography for availability
- Only available from 7 - 7:30 AM on select days
- Photo can include group of up to **50 people**
- Professional lighting/risers are required and included

Magic Kingdom Group Photo - **\$600**

Rush fee for delivery within same day to 12 hours - **\$200**

Rush fee for delivery within 48 hours - **\$100**

Confirmed photography cancelled less than seven (7) days out will be assessed a **50% cancellation fee**

Confirmed photography cancelled less than 72 hours out will be assessed a **100% cancellation fee**



**Standard Border**



**Custom Border**

FOR STANDARD BORDER OPTIONS  
PLEASE CLICK HERE

FOR ADDITIONAL ENHANCEMENTS  
PLEASE CLICK HERE

+ INDICATES SALES TAX (CURRENTLY 6.5%).

**PRICING AND TAXES ARE SUBJECT TO CHANGE WITHOUT NOTICE.**

**FOR MORE INFORMATION, CONTACT YOUR DISNEY REPRESENTATIVE.**

## PHOTOGRAPHY

### VIRTUAL BACKGROUND ON-LOCATION STUDIO PACKAGE

Disney's On-Location Studio with Virtual Background offers you a variety of options when it comes to the planned photographs you want to capture.

Whether you are looking for arrival photos, awards night "step and repeat," individual pictures, or Character photos, the Virtual Background Studio gives you a variety of options.

#### Package includes:

- Photographer and Assistant
- Professional lighting
- Microsite with unlimited downloads or USB drive

#### Prices starting at:

- 2 hours - **\$650**
- 3 hours - **\$850**
- 4 hours - **\$950**

#### Best for:

- Casual photos with a variety of locations
- A custom step and repeat design
- Character experience
- **Not for use outdoors**
- Can include Disney PhotoPass® Service - **\$399**

*Rush fee for delivery within same day to 12 hours- **\$200***

*Rush fee for delivery within 48 hours- **\$100***

*Confirmed photography cancelled less than seven (7) days out will be assessed a **50% cancellation fee***

*Confirmed photography cancelled less than 72 hours out will be assessed a **100% cancellation fee***



FOR STANDARD BORDER OPTIONS  
PLEASE CLICK HERE

FOR ADDITIONAL ENHANCEMENTS  
PLEASE CLICK HERE

+ INDICATES SALES TAX (CURRENTLY 6.5%).  
PRICING AND TAXES ARE SUBJECT TO CHANGE WITHOUT NOTICE.

FOR MORE INFORMATION, CONTACT YOUR DISNEY REPRESENTATIVE.

## PHOTOGRAPHY EXPERIENCE

### STEP INTO THE SCENE: A PHOTO EXPERIENCE

Turn your themed party into an interactive experience for everyone! This photography package paints a storybook experience that everyone will enjoy and remember. Once everyone has decked themselves out in outfits, they join their friends center stage as the stars of this “film shoot.” Then the Disney photographer takes over, directing everyone in his/her own story. The result is a wonderful photograph capturing your guests having the time of their lives.

Pricing includes photography and 6" x 8" on-site photo prints, green screen backdrops, costume overlays and small, hand-held props for a number of interactive themes. We recommend one **Step Into The Scene** setup for every 200 guests.

Available themes include:

- Wild, Wild West
- Pirate Adventure
- Sport Themes
- 50's Sock Hop
- Fun in the Sun Beach Scene
- Villains

2 hours - **\$4,995** per set-up

3 hours - **\$5,150** per set-up

4 hours - **\$5,305** per set-up

To add all images taken at the event to the microsite 48 hours after the event - **\$200**

Custom-themed experiences beyond those listed above are available for an additional **\$2,000**.

Full set decor package (as pictured above) available for an additional **\$1,000**.

**Not for use outdoors.**

Disney PhotoPass® Service not available with this package.

Confirmed photography cancelled less than seven (7) days out will be assessed a **50% cancellation fee**

Confirmed photography cancelled less than 72 hours out will be assessed a **100% cancellation fee**



**Standard Theme**

**- No decor - costumes and hand props only -**



**Standard Theme**

**- With full set decor package added -**

**+ INDICATES SALES TAX (CURRENTLY 6.5%).**

**PRICING AND TAXES ARE SUBJECT TO CHANGE WITHOUT NOTICE.**

**FOR MORE INFORMATION, CONTACT YOUR DISNEY REPRESENTATIVE.**



## PHOTOGRAPHY EXPERIENCE

### STEP INTO THE SCENE - VIRTUAL BACKGROUND

Turn your themed party into an interactive experience for everyone! This photography package paints a storybook experience that everyone will enjoy and remember. Your attendees will join their friends center stage as the stars of this "film shoot." Then our Disney photographer takes over, directing everyone in his/her own story. The result is a wonderful photograph capturing your guests having the time of their lives.

These images can be delivered via Disney Photopass®, microsite, or print-on-location studio (6" x 8" prints included). See print options on page 22.

Please note: the Disney Fine Art Photography Virtual Background can accommodate up to 100 people per hour.

#### Package includes:

- Photographer with camera
- Virtual Screen
- Digital imaging equipment
- Mini projector
- Hand-held props (no costumes included)

#### Available themes include:

- Wild, Wild West
- Pirate Adventure
- Sport Themes
- Walt Disney World Parks and Resorts - Local

#### Prices starting at:

- 2 hours - **\$4,995**
- 3 hours - **\$5,150**
- 4 hours - **\$5,305**

Custom Graphic/Photo Design - **\$2,000**

Costume overlays - **\$1,000**

#### Not for use outdoors.

Confirmed photography cancelled less than seven (7) days out will be assessed a **50% cancellation fee**

Confirmed photography cancelled less than 72 hours out will be assessed a **100% cancellation fee**



**FOR PHOTO DELIVERY OPTIONS  
PLEASE CLICK HERE**

**+ INDICATES SALES TAX (CURRENTLY 6.5%).  
PRICING AND TAXES ARE SUBJECT TO CHANGE WITHOUT NOTICE.**

**FOR MORE INFORMATION, CONTACT YOUR DISNEY REPRESENTATIVE.**



## PHOTO DELIVERY OPTIONS

### PRINT ON LOCATION STUDIO

Offer your attendees prints immediately on site. Includes a photographer, two assistants, a printer and 6" x 8" prints in paper folders.

Based on a 2-hour event, each On-Location Studio can accommodate up to approximately 120 people.

2 hours/per On-Location Studio - **\$1,500**

3 hours/per On-Location Studio - **\$2,100**

4 hours/per On-Location Studio - **\$2,500**

Upload all images from the event to microsite - **\$100**



#### **Not for use outdoors.**

Any custom frames that are provided by the Client or WDW Floral need to be approved by the Photography team in advance.

### A LA CARTE PRINTS

8" x 10" - **\$15**

6" x 8" - **\$10**

Rush fee for delivery within same day to 12 hours- **\$200**

Rush fee for delivery within 48 hours- **\$100**

Confirmed photography cancelled less than seven (7) days out - **50% cancellation fee**

### DISNEY PHOTOPASS® SERVICE WITH UNLIMITED DIGITAL DOWNLOADS

Offer your attendees the Disney PhotoPass® service. Includes PhotoPass® cards, an easy-to-use online service to view, organize, share, customize, download, and order prints of favorite photos.

Disney PhotoPass® Service is available for On-Location Studio and Virtual Background packages only.

Please note that images uploaded to Disney PhotoPass site **will be available for 45 days** from the date of your event.

**\$399** per event



+ INDICATES SALES TAX (CURRENTLY 6.5%).  
PRICING AND TAXES ARE SUBJECT TO CHANGE WITHOUT NOTICE.

FOR MORE INFORMATION, CONTACT YOUR DISNEY REPRESENTATIVE.

# EVENT BRANDING

## PHOTO BORDERS

### EVENT PHOTO BORDER OPTIONS

As part of your package we can enhance your group photo with a border. Choose from our collection of themed borders, and we can also include your group name and/or organization/event logo.

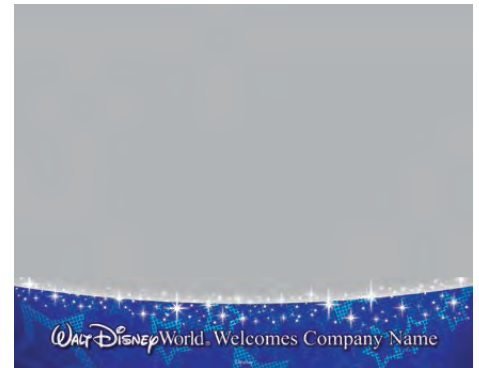
*To better fit your theme, fully customized borders are available - \$200*



*The colors of this border can be customized to fit your organization's branding.*



*This border may not be used with photos of Character meet and greets.*



RETURN TO  
ON-LOCATION STUDIO

RETURN TO  
SOCIAL MEDIA PACKAGE

RETURN TO  
GROUP PHOTO PACKAGE

RETURN TO VIRTUAL  
BACKGROUND

+ INDICATES SALES TAX (CURRENTLY 6.5%).  
PRICING AND TAXES ARE SUBJECT TO CHANGE WITHOUT NOTICE.

FOR MORE INFORMATION, CONTACT YOUR DISNEY REPRESENTATIVE.

### PHOTOGRAPHY ENHANCEMENTS

#### CANDID DOCUMENTATION — ADD-ONS

- Additional Candid Photographer (up to 2 hours) - **\$200**
- Add an additional 30 minutes - **\$62.50**
- Add an additional hour - **\$125**
- Add a Studio (up to 2 hours) - **\$300 each**
- Add a FORMAL group photo (up to 30 people) - **\$100**
- Add "print on site" (print 6" x 8", up to 2 hours) - **\$1,500**
- 6" x 8" prints - **\$10 each**
- Additional USB drive:
  - delivered on site - **\$100 each**
  - with shipping - **\$130 each**

[RETURN TO  
CANDID DOCUMENTATION](#)

#### ON LOCATION STUDIO — ADD-ONS

- Additional Candid Photographer (up to 2 hours) - **\$200**
- Add an additional 30 minutes - **\$62.50**
- Add an additional hour - **\$125**
- Add a Studio (up to 2 hours) - **\$300 each**
- Add a FORMAL group photo (up to 30 people) - **\$100**
- Add "print on site" (print 6" x 8", up to 2 hours) - **\$1,500**
- 6" x 8" prints - **\$10 each**
- 8" x 10" prints - **\$15 each**
- Additional USB drive:
  - delivered on site - **\$100 each**
  - with shipping - **\$130 each**

[RETURN TO  
ON-LOCATION STUDIO](#)

[RETURN TO VIRTUAL  
ON-LOCATION STUDIO](#)

#### GROUP PHOTO PACKAGE — ADD-ONS

- Additional Candid Photographer (up to 2 hours) - **\$200**
- Add a Studio (up to 2 hours) - **\$300 each**
- 8" x 10" prints - **\$15 each**
- Additional USB drive:
  - delivered on site - **\$100 each**
  - with shipping - **\$130 each**

[RETURN TO  
GROUP PHOTO PACKAGE](#)

+ INDICATES SALES TAX (CURRENTLY 6.5%).  
PRICING AND TAXES ARE SUBJECT TO CHANGE WITHOUT NOTICE.

FOR MORE INFORMATION, CONTACT YOUR DISNEY REPRESENTATIVE.

## PHOTOGRAPHY BACKDROP

### STEP & REPEAT PHOTO BACKDROP

Our step & repeat backdrop uses your event icon or organization's logo to make a perfect backdrop for your attendees to be photographed during your special event. Our price includes design, printing of a non-glare fabric backdrop, frame rental, set-up and removal.

**\$1,840 each** – 12' x 8' backdrop with frame rental

*Photography not included.*

*Pricing for indoor use only. For outdoor solutions, please discuss your needs with your Disney Representative to determine pricing.*



#### EXPERT TIP #1

Ask your Disney Representative about available enhancements such as a red carpet, props, stanchions, greens package, or Disney Fine Art Photography services.



#### EXPERT TIP #2

For a true "red carpet experience," ask your Disney Representative about adding a live emcee, lighting, camera, and projection for "on the spot" interviews with your attendees.

+ INDICATES SALES TAX (CURRENTLY 6.5%).

**PRICING AND TAXES ARE SUBJECT TO CHANGE WITHOUT NOTICE.**

**FOR MORE INFORMATION, CONTACT YOUR DISNEY REPRESENTATIVE.**



### SOCIAL MEDIA EXPERIENCE

### AUGMENTED REALITY EXPERIENCE



### ANIMATED PHOTO BACKDROP

Your guests will have tons of fun getting their picture taken in front of a custom animated photo backdrop. The backdrop looks like one of your regular event branded signs, but when users view it on their mobile device using the free Aurasma app\*, the background comes to life, creating an opportunity to reinforce your brand and deliver your messaging in a unique and creative way.

**\$6,000** – 12' x 8' Photo backdrop with a 20-second augmented reality experience

### AUGMENTED REALITY EXPERIENCES

**\$4,100** – Additional 20-second Augmented Reality experiences based on an existing graphic "trigger image" (for example, turn your logo into a trigger image that launches your latest video or plays a custom animation).

*Please note that this experience does not include a Disney photographer. Viewing and capture of the Augmented Reality Experience requires the use of the free Aurasma app for iPhone and Android devices, available online from the App Store and Google Play.*

**+ INDICATES SALES TAX (CURRENTLY 6.5%).  
PRICING AND TAXES ARE SUBJECT TO CHANGE WITHOUT NOTICE.**

**FOR MORE INFORMATION, CONTACT YOUR DISNEY REPRESENTATIVE.**

## EVENT ENHANCEMENTS

### PAPER BEVERAGE NAPKINS

Provide visibility to your logo or message right in the palm of your Guests' hands with branded paper beverage napkins! Available in beverage or hors d'oeuvre size, napkins can feature a single color foil imprint in a rainbow of napkin colors, or full color logo on white or ivory napkins. Printable size allows for one logo and up to two lines of text, depending on size of messaging.

**\$75+** – Box of 50 napkins (one color logo/ordered in boxes of 50 per logo).  
Volume price breaks are available based on increments of 50.

*Please allow two weeks for production or more depending on quantities purchased.*



### PILLOWS

Primo leather-like fabric is screened with your logo or event icon with the utilization of heat infusion. The best part: these pillows are yours to keep! Color options are based on lead time and quantity; please discuss the right colors for you with your Disney Representative.

**\$75+** – Per Pillow (plus \$75 one-time art fee per logo).

*Please allow two weeks for production or more depending on quantities purchased.*



### ACRYLIC PARTY PASSES

Clear acrylic is etched as a "pendant" for your guests to wear with your logo or event icon. An LED light attached to the neck cord allows your message to glow. This item is the perfect favor for your Guests to provide them the backstage pass to party!

**\$11+** – Per Pass (plus \$75 one-time art fee per logo/artwork).

Available enhancement options include LED light colors, colored party passes, etc.

*Please allow three weeks for production or more depending on quantities purchased.*



**+ INDICATES SALES TAX (CURRENTLY 6.5%).  
PRICING AND TAXES ARE SUBJECT TO CHANGE WITHOUT NOTICE.**

**FOR MORE INFORMATION, CONTACT YOUR DISNEY REPRESENTATIVE.**

## EVENT ENHANCEMENTS

### CHOCOLATE AMENITY

This is certainly a delicious treat for your Guests! Four assorted truffles are nestled in a hexagon-shaped chocolate box. The chocolate box is screened with your logo or event icon. Even the box itself is edible as it's also made out of chocolate! The entire amenity is wrapped in cellophane with your choice of color of ribbon tie.

**\$15+** – Per Amenity not including hotel delivery to the Guest rooms.

*Please allow two weeks for production or more depending on quantities purchased.*



### ACRYLIC CENTERPIECES

Allow your logo or event icon to shine as the center of attention at each table! Clear acrylic etched with your brand shines with LED light. Additional options such as alternative shapes, colors, floral accents around the centerpieces, and even programmable lighting are available.

Please ask your Disney Representative for a quote based on table size, logo shape and color needs!



### ICE

Your brand is “frozen” in time with a cool way to serve drinks! Ice bars and ice luges are a unique way to show your logo or event icon. Even as simple as an etched sculpture rather than a bar or luge, this option creates a unique showstopper! Starting fees are below; additional enhancements such as colored uplighting, colored logos within the ice, and combination ice bar with ice luge are available.

**\$1,216+** – Single Ice Sculpture, Luge, or Block (plus \$300 delivery fee).

**\$3,800+** – Single Ice Bar (plus \$300 delivery fee).

*Please allow two weeks for production or more depending on quantities purchased.*



**+ INDICATES SALES TAX (CURRENTLY 6.5%).  
PRICING AND TAXES ARE SUBJECT TO CHANGE WITHOUT NOTICE.**

**FOR MORE INFORMATION, CONTACT YOUR DISNEY REPRESENTATIVE.**

### EVENT ENHANCEMENTS

#### GEO GLOW HIGH BOYS

Beautiful illuminated acrylic high boy tables are a unique alternative to traditional reception tables. These tables can rotate in an array of colors throughout the evening, set to stay on any one desired color, or be customized to change preferred colors to compliment your theme. In addition, your company logo or even icon can be screened on the tops of the high boys to literally illuminate your brand!

**\$125+** – Per GEO High Boy Table are for one day rental (*plus a \$300 one-time delivery fee*).

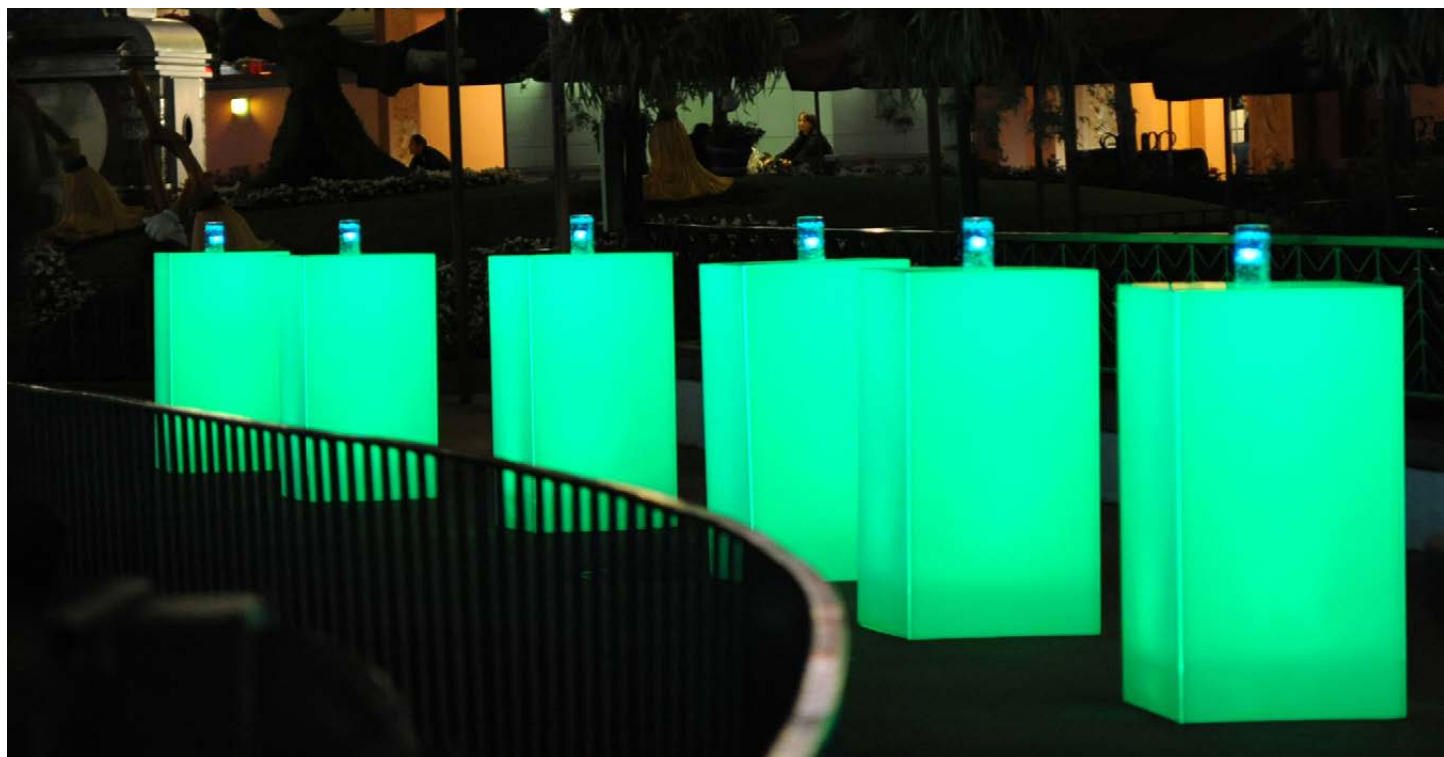
This includes single color lighting or random rotation of glow throughout the LED light spectrum.

Please ask your Disney Representative for additional quotes on choreographed lighting programming.

**\$95+** – Per table for clear static cling branding on top of the high boy surface (*plus a one time \$75 art fee per logo/image*).

*The printing dimensions are 22.25"W x 41.25"H.*

*A vector version (AI/EPS format) of your logo or icon (or a 300 dpi logo/icon at actual size) is required at least 15 working days prior to the event for production.*



**+ INDICATES SALES TAX (CURRENTLY 6.5%).**

**PRICING AND TAXES ARE SUBJECT TO CHANGE WITHOUT NOTICE.**

**FOR MORE INFORMATION, CONTACT YOUR DISNEY REPRESENTATIVE.**



### CHARGING STATIONS

Today's attendees rely on mobile technology more than ever, and having a charged device is a constant concern. To charge their phone, attendees simply open a locker, connect their device and lock it. We offer three sizes of charging stations operating on standard 110-volt power outlets. Charging stations not only provide attendees with the peace of mind to focus on your event, they allow you to offer sponsorship opportunities to generate additional revenue.

#### POWERSTATION

Rental

**\$1,800**

- 4 lockable bays (with key pads) and smart locking system
- Branding capabilities
- Ability to charge up to 4 phones
- 4 Apple® 30-pin/4 Apple® Lightning/4 Micro USB



#### POWERSTATION PRO

Rental

**\$2,400**

- 20" programmable LCD display
- Branding capabilities
- Includes a BrightSign HD 120 media server
- 6 lockable bays with key pads and smart locking system
- Ability to charge up to 4 phones
- 6 Apple® 30-pin/6 Apple® Lightning/6 Micro USB

*Each charging unit includes the following options for charging: 1 actual 3-prong plug, 1 cell phone adapter for an Android device, 1 cell phone adapter for an Apple® iPhone 5, 6, or 7*



**+ INDICATES SALES TAX (CURRENTLY 6.5%).**

**PRICING AND TAXES ARE SUBJECT TO CHANGE WITHOUT NOTICE.**

**FOR MORE INFORMATION, CONTACT YOUR DISNEY REPRESENTATIVE.**

## CHARGING FURNITURE

Charging Furniture options start as small as a single chair and can grow as large as your imagination and budget allows. As an additional option, sponsors can participate in these options by providing branding icons or messaging printed directly on furniture backs, charging swing table tops, or as vinyl wraps placed on highlighted flat surfaces. Please work with your Disney Representative to discuss locations and spacing needs.

*Pricing does not include: a \$75 art set-up fee per logo/message, a \$300 delivery fee pending quantity of items requested, or any optional underlighting on soft seating décor.*

## LOCKING CELL PHONE CUBE WITH DUAL VIDEO SCREENS (RENTAL)

Plug it in...lock it up...walk away. Come back to a full charge! This charging locker consists of 24 units that keep coveted mobile devices safe and secure via a digital lock. Each locker has a universal fast charging cord that fits all major cell phones and tablets. TV monitors and side panels offer a great branding opportunity for your organization or your sponsors.

	Multi*	Single
Without graphics	<b>\$2,998.50+</b>	<b>\$1,997+</b>
1-side graphics	<b>\$3,095.50+</b>	<b>\$2,097+</b>
2-side graphics	<b>\$3,195.50+</b>	<b>\$2,197+</b>
3-side graphics	<b>\$3,295.50+</b>	<b>\$2,297+</b>
4-side graphics	<b>\$3,395.50+</b>	<b>\$2,397+</b>

\* Multi-day rate = rental period of up to 7 days

Requires 20 amps of power

This option is also available without video screens.  
See your Disney Representative for options and pricing.



**+ INDICATES SALES TAX (CURRENTLY 6.5%).  
PRICING AND TAXES ARE SUBJECT TO CHANGE WITHOUT NOTICE.**

**FOR MORE INFORMATION, CONTACT YOUR DISNEY REPRESENTATIVE.**

CHARGING FURNITURE

GEO CHARGING HIGHBOY (RENTAL)

	Multi*	Single
Without graphics	\$375+	\$250+
1-side graphics	\$470+	\$345+
2-side graphics	\$565+	\$440+
3-side graphics	\$660+	\$535+
4-side graphics	\$755+	\$630+

\* Multi-day rate = rental period of up to 7 days

Requires 5 amps of power

Pricing does not include seating



+ INDICATES SALES TAX (CURRENTLY 6.5%).  
PRICING AND TAXES ARE SUBJECT TO CHANGE WITHOUT NOTICE.

FOR MORE INFORMATION, CONTACT YOUR DISNEY REPRESENTATIVE.

CHARGING FURNITURE

CONVERSATION CHARGING TABLE -  
DINING HEIGHT (RENTAL)

Includes Four Clear Flex Chairs and  
Black or White Chair Pads

	Multi*	Single
Rental	\$600+	\$400+

\* Multi-day rate = rental period of up to 7 days

Requires 5 amps of power

Available with a "woodgrain" or white top

Other colors of chair pads available for an additional charge



CONVERSATION CHARGING TABLE -  
HIGH BOY HEIGHT (RENTAL)

Includes Four Clear Flex Swivel Stools and  
Black or White Chair Pads

	Multi*	Single
Rental	\$900+	\$600+

\* Multi-day rate = rental period of up to 7 days

Requires 5 amps of power

Available with a "woodgrain" or white top

Other colors of chair pads available for an additional charge

+ INDICATES SALES TAX (CURRENTLY 6.5%).  
PRICING AND TAXES ARE SUBJECT TO CHANGE WITHOUT NOTICE.

FOR MORE INFORMATION, CONTACT YOUR DISNEY REPRESENTATIVE.



CHARGING FURNITURE

CONVERSATION CHARGING TABLE WITH SIX LOCKERS (RENTAL)

	Multi*	Single
Rental	\$825+	\$550+

\* Multi-day rate = rental period of up to 7 days  
Requires 5 amps of power  
Charging ability only available on the top of the table



SEVEN-SECTION L COUCH (RENTAL)

In White, Black, Espresso Brown or Red with  
Two Executive Lighted Towers and Two Charging Swing Tables

	Multi*	Single
Without Graphics	\$2,115+	\$1,410+
1 side of graphic per executive tower	\$2,275+	\$1,466+
2 sides of graphic per executive tower	\$2,435+	\$1,522+

\* Multi-day rate = rental period of up to 7 days  
Requires 20 amps of power  
Charging tables include charging ability with a multi-adapter  
Other colors of seating available for an additional charge



+ INDICATES SALES TAX (CURRENTLY 6.5%).  
PRICING AND TAXES ARE SUBJECT TO CHANGE WITHOUT NOTICE.

FOR MORE INFORMATION, CONTACT YOUR DISNEY REPRESENTATIVE.

CHARGING FURNITURE

TWELVE-SECTION FULL MOON CHARGING STATION  
(RENTAL)

*In White, Black, Espresso Brown or Red with 6 Charging Swing  
Tables*

This charging configuration consists of 12 seats and 6 charging swing tables. Each charging table offers (1) 3-prong electrical outlet and comes with a universal adapter that fits all major cell phones and tablets. Furniture backs and swing table tops offer a great branding opportunity for your organization or your sponsors.



	Multi*	Single
Without Graphics	\$3,060+	\$2,040+

*\* Multi-day rate = rental period of up to 7 days*

*Requires 20 amps of power*

*Charging tables include charging ability with a multi-adapter*

*Other colors of seating available for an additional charge*

*Greens package pictured not included; see your Disney Representative for details*

+ INDICATES SALES TAX (CURRENTLY 6.5%).  
PRICING AND TAXES ARE SUBJECT TO CHANGE WITHOUT NOTICE.

FOR MORE INFORMATION, CONTACT YOUR DISNEY REPRESENTATIVE.

CHARGING FURNITURE

TWELVE-SECTION FULL MOON CHARGING STATION  
WITH WATER WALL (RENTAL)

*In White, Black, Espresso Brown or Red with Swing Tables and  
Water Wall*

	Multi*	Single
Without Graphics	\$3810+	\$2,540+
2-sided branding upgrade on the water wall; up to 32" w x 36" h graphic	\$4,050+	\$2,780+



*\* Multi-day rate = rental period of up to 7 days*

*Requires (2) 20 amps of power (one for configuration; one for water wall)*

*Charging tables include charging ability with a multi-adapter*

*Other colors of seating available for an additional charge*

+ INDICATES SALES TAX (CURRENTLY 6.5%).  
PRICING AND TAXES ARE SUBJECT TO CHANGE WITHOUT NOTICE.

FOR MORE INFORMATION, CONTACT YOUR DISNEY REPRESENTATIVE.

## ENGAGEMENT TOOLS

### CATCHBOX

Catchbox is the world's first soft wireless microphone that you can throw into an audience to kick-start a discussion. Catchbox improves lectures, conferences, and group work by encouraging audiences to share ideas and discuss challenges.

- Customization — with your logo, company color or design of your choosing
- Lightweight design — to be easily tossed from one person to the next
- Affordability — more cost effective than multiple microphones
- Ease-of-use — no more having runners speeding around the room to pass a microphone
- Fun — standing in line behind a microphone is a thing of the past

**\$410** per day

**\$800** per event



+ INDICATES SALES TAX (CURRENTLY 6.5%).  
PRICING AND TAXES ARE SUBJECT TO CHANGE WITHOUT NOTICE.

FOR MORE INFORMATION, CONTACT YOUR DISNEY REPRESENTATIVE.



## ENGAGEMENT TOOLS

### SOCIAL MEDIA WALL



- Pulls in posts and photos from Twitter and Instagram
- Choose from seven full-screen display animations
- Customize your display color, theme, and background
- Apply filters to moderate content or select each post with the Curated Gallery
- Use our widget to embed SocialWall on your website
- Build Pre-Event Buzz
- Inspire On-Site Event Engagement
- Extend Post-Event Excitement

**\$3,200** per event includes:

- 1 - 46" monitor on stand for display
- 1 - wired internet connection

*Additional equipment available for an additional charge..*

**+ INDICATES SALES TAX (CURRENTLY 6.5%).  
PRICING AND TAXES ARE SUBJECT TO CHANGE WITHOUT NOTICE.**

**FOR MORE INFORMATION, CONTACT YOUR DISNEY REPRESENTATIVE.**

## ENGAGEMENT TOOLS

### DISNEY INTERACTIVE ACTORS

Whether you are looking for comedic actors to populate your themed environment, or a customized character who can be incorporated into your event, we are experts in choosing just the right interactive actors to engage your audience and deliver your organization's key messages.

### ATMOSPHERE ACTORS

Atmosphere Actors are Disney's interactive, improvisational entertainers who mix and mingle with your Guests. Personalized to your organization and theme, they are some of the most memorable characters you'll ever meet. From their names and costumes, to their props and interactions, they use your industry lingo to reinforce your messages in ways that won't soon be forgotten. Every interaction with them is a mini show guaranteed to bring humor, entertainment, and excitement to your Guests. You never know who you'll run into or just how hard you will laugh!

Pricing starting at **\$1,500**

### FEATURED ACTORS

Featured Actors are Disney's own interactive, improvisational entertainers who are customized to your organization and event theme and can be incorporated into a variety of settings. Whether hosting your awards program, facilitating your general session, offering entertaining energizers in your breakouts, or mingling with your party crowd, they are some of the most memorable characters you'll ever meet. From their customized names, costumes, and props, to their hilarious delivery of "inside information," they highlight your key messages in ways that won't soon be forgotten. Every interaction with them is a mini show guaranteed to bring humor, entertainment, and excitement to your Guests.

Pricing starting at **\$2,000**

*Talent is scheduled based on availability and is subject to change without notice.*



**+ INDICATES SALES TAX (CURRENTLY 6.5%).  
PRICING AND TAXES ARE SUBJECT TO CHANGE WITHOUT NOTICE.**

**FOR MORE INFORMATION, CONTACT YOUR DISNEY REPRESENTATIVE.**

### EVENT DOCUMENTATION

#### SMALL MEETINGS VIDEO DOCUMENTATION PACKAGE



Ever wish you had a video of your meeting to share with those who couldn't attend? Need a video you can leverage for training purposes, or for promoting your future events? This package offers an easy solution.

Designed for groups of up to 100 attendees, our Small Meeting Video Documentation package offers:

- Video recording in high definition 1920 x 1080 format
- One (1) wireless lavalier microphone to capture speaker's audio
- One (1) professional videographer
- RAW footage copied to a portable hard drive and provided to client at end of event

**\$995** – Half-Day Package: Up to four (4) concurrent hours

**\$1495** – Full-Day Package: Up to eight (8) concurrent hours

Note: Package available only for Disney Resort meetings with up to 100 attendees. For larger groups, please discuss solutions with your Disney Representative.

+ INDICATES SALES TAX (CURRENTLY 6.5%).  
PRICING AND TAXES ARE SUBJECT TO CHANGE WITHOUT NOTICE.

FOR MORE INFORMATION, CONTACT YOUR DISNEY REPRESENTATIVE.



## EVENT DOCUMENTATION

### PHOTO MONTAGE



A conference highlights photo montage is a great way to engage your attendees during the conference. It can be played daily on a monitor in the foyer near your coffee bar, on your big general session screen as a “walk-in loop,” or during your closing session. It can even be sent out digitally, post-event, via an email link. Price includes a music track from our stock library. Title slides with the sponsor’s logo can be inserted into the montage recognizing the sponsors of various functions, or acknowledging an exclusive sponsor for the entire montage.

**\$950** – Standard Photo Montage, 3-minute duration (*about 60 images*)

**\$1,150** – Enhanced Photo Montage, 5-minute duration (*about 100 images*)

*Photography not included.*

*Please discuss your needs with your Disney Representative to determine photography pricing.*

**+ INDICATES SALES TAX (CURRENTLY 6.5%).  
PRICING AND TAXES ARE SUBJECT TO CHANGE WITHOUT NOTICE.**

**FOR MORE INFORMATION, CONTACT YOUR DISNEY REPRESENTATIVE.**



## EVENT DOCUMENTATION

### GRAPHIC RECORDING

Experts estimate that 65 percent of the population are visual learners, responding best to pictures, graphics, maps, and written information. Graphic recording capitalizes on this ability through live visual capture of event keynotes, panels, and training content in engaging, colorful murals or storyboard form, literally drawing on themes and abstract concepts to bring them to life on 60" x 40" boards.

A skilled graphic recorder can capture visuals that cross over the boundaries of culture and language to provide a lasting visual record of your meeting content.

#### Package includes:

- Pre-event consultation to clarify goals and objectives, and to pre-sketch key themes and content points
- Live visual capture of meeting content (up to three [3] sessions per day)
- Follow-up with capture of final images. If needed, we can prepare and ship the completed boards back to your office.



- 2 days (one graphic recorder) - **\$9,500**
- 3 days (one graphic recorder) - **\$13,000**

+ INDICATES SALES TAX (CURRENTLY 6.5%).

PRICING AND TAXES ARE SUBJECT TO CHANGE WITHOUT NOTICE.

FOR MORE INFORMATION, CONTACT YOUR DISNEY REPRESENTATIVE.

# EVENT BRANDING AND SIGNAGE

## PORTABLE SIGNAGE

### EASEL SIGNS

Easel Signs can be purchased individually or included in a larger sponsorship package. They are 24" wide x 36" high and printed on 3/16" gator board, single-sided.

**\$160 each** – Qty. 1-9 (includes design, printing, and use of resort easel stand)

**\$1,440** – Bundle of 10



### RETRACTABLE BANNERS

Our retractable floor-standing banners are approximately 33" wide x 78" high and very portable, allowing them to be relocated and repurposed during your event. Use them to display the agenda or other event content, or to exclusively promote your sponsors. These single-sided banners may be purchased individually or included in a larger sponsorship package.

**\$360 Economy** – Qty. 1-9 Cost-savings option for single-event usage.

Lightweight frame; banner changes not recommended (includes design, printing, and carrying case)

**\$570 Premium** – Qty. 1-9 Our Premium retractable banner stands are a quality above our economy retractable banners. The Premium banner stands have more durable hardware and are better suited for replacing the graphic. (includes design, printing, and carrying case)

**\$3,240 Economy Bundle** – Bundle of 10 (includes design, printing, and carrying case)

**\$5,130 Premium Bundle** – Bundle of 10 (includes design, printing, and carrying case)

+ INDICATES SALES TAX (CURRENTLY 6.5%).

PRICING AND TAXES ARE SUBJECT TO CHANGE WITHOUT NOTICE.

FOR MORE INFORMATION, CONTACT YOUR DISNEY REPRESENTATIVE.

### PORTABLE SIGNAGE



### SLIP-COVER BANNER STANDS

These fashionable floor-standing banners have a very clean and sophisticated look, and their curved tops add extra focus. Plus, they're the easiest graphic change banner stand system ever – simply slip the two-sided fabric graphic over the frame! Frames are available for rent or purchase.

**\$650 each** – 24" x 84" Rental (\$820 for purchase, includes stand and carry bag)

**\$700 each** – 30" x 84" Rental (\$860 for purchase, includes stand and carry bag)

**\$720 each** – 36" x 84" Rental (\$890 for purchase, includes stand and carry bag)

+ INDICATES SALES TAX (CURRENTLY 6.5%).

PRICING AND TAXES ARE SUBJECT TO CHANGE WITHOUT NOTICE.

FOR MORE INFORMATION, CONTACT YOUR DISNEY REPRESENTATIVE.

### PORTABLE SIGNAGE

#### FLOOR GRAPHICS

Floor graphics can be used as directional signage, for event branding, or to acknowledge award winners during a gala celebration. They are available in 24," 36," or 48" square or circular sizes and may be applied to carpeted or hard surfaces, and they may be purchased individually or bundled as part of a sponsor signage package. Price includes installation and removal.

**\$200 each** – 24" graphic, Qty. 1-9 (\$1,800 – Bundle of 10)

**\$250 each** – 36" graphic, Qty. 1-9 (\$2,250 – Bundle of 10)

**\$370 each** – 48" graphic, Qty. 1-9 (\$3,330 – Bundle of 10)



#### TABLE TOPPERS

Brand your tables at your reception, tradeshow, or networking event with these tabletop overlays. These are trimmed to fit our cocktail table highboys, or any size at your request. The water-resistant surface provides a reminder of your brand or event sponsor. Price includes printing and delivery only.

**\$200 each** – 30" graphic, Qty. 1-9 (\$1800 – Bundle of 10)



+ INDICATES SALES TAX (CURRENTLY 6.5%).

PRICING AND TAXES ARE SUBJECT TO CHANGE WITHOUT NOTICE.

FOR MORE INFORMATION, CONTACT YOUR DISNEY REPRESENTATIVE.



# EVENT BRANDING AND SIGNAGE

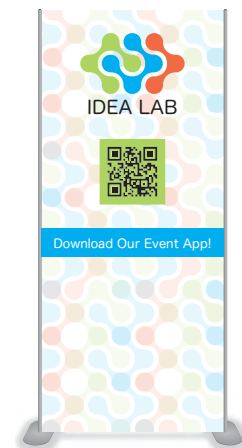
## PORTABLE SIGNAGE

### METER BOARD (METAL BASE)

Our Monolith (meter board) sign is easily seen within your large meeting space. They are 48' wide x 96" high and are perfect for displaying your event agenda or promoting sponsors in foyer areas.

**\$520 each** – Single-sided (*includes design, printing, and metal frame rental*)

**\$650 each** – Double-sided (*includes design, printing, and metal frame rental*)



### METER BOARD (CARDBOARD BASE)

Our Monolith (meter board) sign is easily seen within your large meeting space. Our cardboard base signs are 38" wide x 84" high and are perfect for displaying your event agenda or promoting sponsors in foyer areas.

**\$390 each** – Single-sided (*includes design, printing, and cardboard base*)

**\$500 each** – Double-sided (*includes design, printing, and cardboard base*)



### TRIANGULAR METER BOARD

Our 3-sided meter boards are great for wide open spaces or at intersecting hallways. They measure 36" x 84" x .5"

**\$850 each** (*includes design, printing and frame rental*)



+ INDICATES SALES TAX (CURRENTLY 6.5%).

PRICING AND TAXES ARE SUBJECT TO CHANGE WITHOUT NOTICE.

FOR MORE INFORMATION, CONTACT YOUR DISNEY REPRESENTATIVE.

# EVENT BRANDING AND SIGNAGE

## PORTABLE SIGNAGE

### STACKED CUBES

Our cube stacks provide a very versatile signage option for promoting sponsors, reinforcing your brand, or delivering event information. For example, stack two or three cubes with their sides flush to create a dramatic column of information. Or, rotate them off axis from one another to create additional visual interest. As another option, use two stacks of three cubes to create a bold entrance to your general session. Then, change out some of the sides of the cubes and create three stacks of two cubes to designate breakout room or special event areas at different times during your event. The sides of the cubes are attached to a lightweight metal frame using magnetic strips; repositioning the cubes and changing side panels is very easy.

**\$1,180** – Set of (3) 2' Cubes (includes four panels; \$160 each for additional panels)

**\$800 each** – 3' Cube (includes four panels; \$260 each for additional panels)

**\$1030 each** – 4' Cube (includes four panels; \$300 each for additional panels)

*Pricing includes design, printing, and frame rental*



3' Cube shown

### GIANT CUBE

Our Giant Cubes are large enough to help brand your event with a strong image while delivering lots of event information such as your full agenda. The cubes are made of a lightweight aluminum frame with flame retardant stretch fabric outer skin that supports high-resolution printing. The cubes come in three sizes.

**\$4,000 each**, 8' x 8' x 8' (includes design, printing and frame rental)

**\$4,600 each**, 8' x 8' x 10' (includes design, printing and frame rental)

**\$5,450 each**, 8' x 8' x 12' (includes design, printing and frame rental)



8' x 8' x 10' Cube shown

+ INDICATES SALES TAX (CURRENTLY 6.5%).

PRICING AND TAXES ARE SUBJECT TO CHANGE WITHOUT NOTICE.

FOR MORE INFORMATION, CONTACT YOUR DISNEY REPRESENTATIVE.

# EVENT BRANDING AND SIGNAGE

## PORTABLE SIGNAGE

### GRAPHIC WALLS

Our large Graphic Walls provide a great way to brand medium to large spaces, such as in foyers and at the end of hallways. They are printed on high-resolution, non-glare fabric, and are virtually wrinkle-free. Price includes frame rental, setup, and breakdown. Optional LED lighting is available for an additional fee.

#### 8' HIGH SCISSOR-FRAME WALL

**\$1,480** – 8' x 8' fabric wall

**\$1,500** – 12.5' x 8' fabric wall

**\$3,000** – 16' x 8' fabric wall

*Optional LED Light Bars Available @ \$150 each  
(requires location near a power outlet)*



12.5' x 8' Graphic wall shown

#### 10' HIGH SCISSOR-FRAME WALL

**\$3,000** – 12.5' x 10' fabric wall

**\$5,500** – 25' x 10' fabric wall

Price includes fabrication, frame rental, setup, and breakdown.

*Optional LED Light Bars Available @ \$150 each  
(requires location near a power outlet)*



25' x 10' Graphic wall shown

**+ INDICATES SALES TAX (CURRENTLY 6.5%).**

**PRICING AND TAXES ARE SUBJECT TO CHANGE WITHOUT NOTICE.**

**FOR MORE INFORMATION, CONTACT YOUR DISNEY REPRESENTATIVE.**

# EVENT BRANDING AND SIGNAGE

## PORTABLE SIGNAGE

### GRAPHIC WALLS

#### OUTDOOR GRAPHIC WALL

This vinyl graphic wall is designed for outdoor use. It utilizes a 60" rear-extended jack stand to accommodate ballast to secure it. Price includes fabrication, frame rental, setup including ballast, and breakdown.

**\$5,220** – 12' x 8' outdoor wall



#### OUTDOOR QUAD TOWER

This non-illuminated outdoor sign provides (4) weather-resistant Coroplast® surfaces to provide visibility from all sides. It measures 40" wide by 40" deep by 96" tall and is weighted from inside. Price includes fabrication, frame rental, setup including ballast, and breakdown.

**\$1,800 each**



+ INDICATES SALES TAX (CURRENTLY 6.5%).

PRICING AND TAXES ARE SUBJECT TO CHANGE WITHOUT NOTICE.

FOR MORE INFORMATION, CONTACT YOUR DISNEY REPRESENTATIVE.



### PORTABLE SIGNAGE

#### BACKLIT WALLS

##### 8' TALL BACKLIT GRAPHIC WALL

Add a touch of brilliance to your event environment - the modern version of the old light-box technology. This graphic wall comes in two sizes. The frame structure contains ultra-bright LED fixtures that produce a fantastic-looking, bright image that will capture everyone's attention, regardless of ambient lighting conditions.

Pricing includes design, printing, frame rental, setup, and removal.

*For indoor use only.*

**\$3,400** – 10' x 8' Display

**\$4,550** – 16' x 8' Display



+ INDICATES SALES TAX (CURRENTLY 6.5%).

PRICING AND TAXES ARE SUBJECT TO CHANGE WITHOUT NOTICE.

FOR MORE INFORMATION, CONTACT YOUR DISNEY REPRESENTATIVE.

# EVENT BRANDING AND SIGNAGE

## PORTABLE SIGNAGE

### DIGITAL SIGNAGE PACKAGE

Provide dynamic, eye-catching signage with this Digital Signage package that integrates full-motion graphics, real-time clock, and scheduled event and sponsor announcements. No wi-fi required. Can be custom-branded to your event. Easy, seamless content updating ensures that your attendees have the latest updates.

#### Package includes:

- Consultation and creative direction
- Full-motion graphics development from storyboarding through delivery
- Assistance in planning and formatting your content
- Rental of all monitors, stands, and playback devices for the duration of your event

#### Price per event:

- Package of 3 monitors - **\$14,000**
- Package of 5 monitors - **\$17,500**



+ INDICATES SALES TAX (CURRENTLY 6.5%).  
PRICING AND TAXES ARE SUBJECT TO CHANGE WITHOUT NOTICE.

FOR MORE INFORMATION, CONTACT YOUR DISNEY REPRESENTATIVE.



# RESORT-SPECIFIC SIGNAGE

— DISNEY'S BOARDWALK INN —

On the following pages, you may browse several popular areas for branding and signage throughout the resort meeting space.

Catalog pricing includes project management, design, installation, and removal of individual sign elements. Purchase of multiple items may drive efficiencies that can result in cost savings.

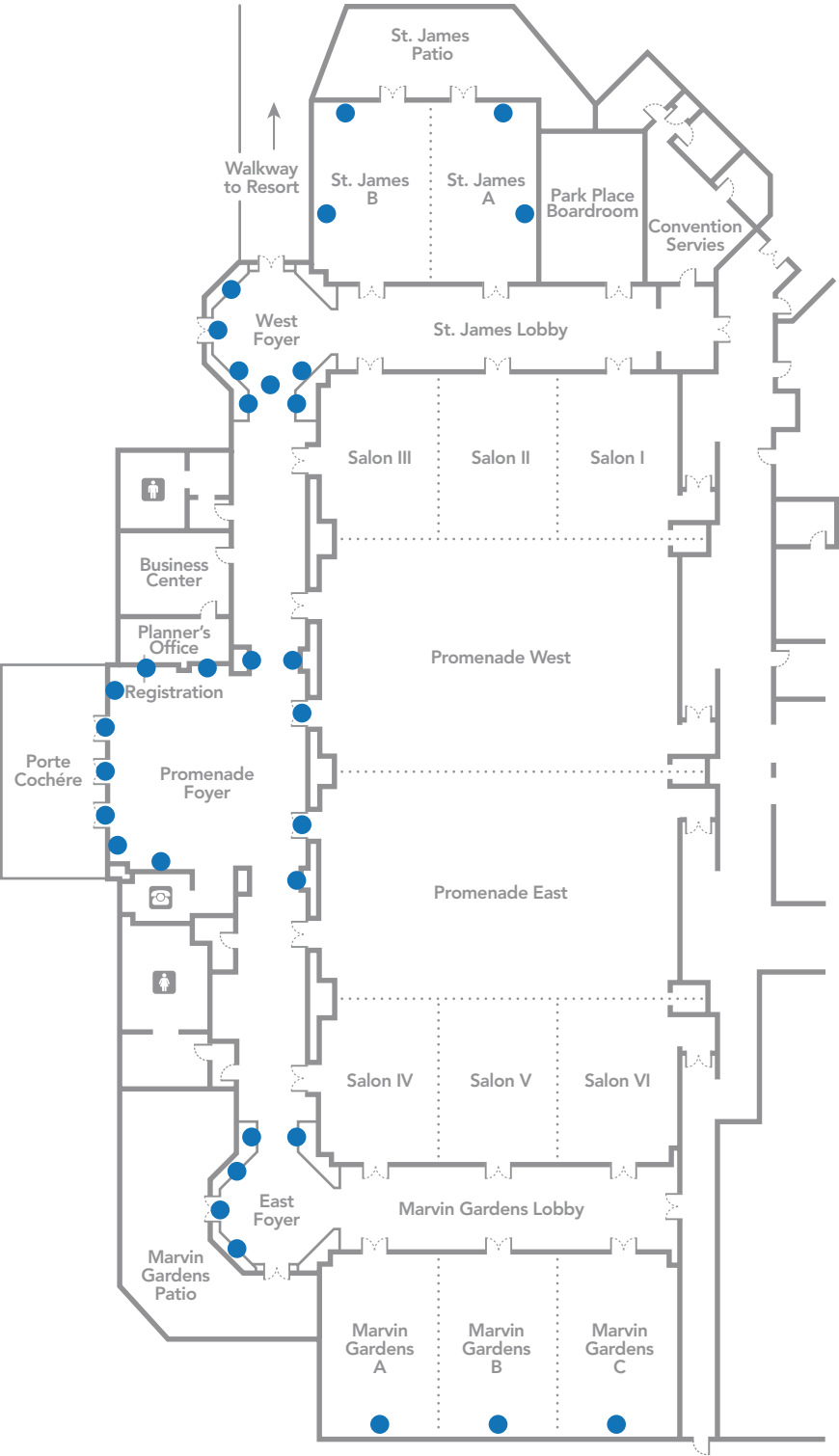
Please note that availability of locations depicted within is not guaranteed due to possible shared use of the meeting space by other groups.

In the examples, the blue color indicates adhesive graphics, and the green color indicates hanging banners. For safety purposes, hanging banners must be installed by Disney.

Please check with your Disney Representative for availability and any additional questions.

**FOR MORE INFORMATION, CONTACT YOUR DISNEY REPRESENTATIVE.**

# SIGNAGE OPPORTUNITIES FOR DISNEY'S BOARDWALK INN



FOR MORE INFORMATION, CONTACT YOUR DISNEY REPRESENTATIVE.



# SIGNAGE OPPORTUNITIES FOR DISNEY'S BOARDWALK INN



## PROMENADE FOYER & REGISTRATION AREA

3000 – Wall Graphic, left of Registration Desk	\$1,230
3001 – Registration Desk Header, left	\$475
3002 – Registration Desk Header, right	\$520

*Note: Availability of locations depicted is not guaranteed due to possible shared use of the meeting space by other groups. Please check with your Disney Representative for availability.*

**PRICING IS SUBJECT TO CHANGE WITHOUT NOTICE.**

**FOR MORE INFORMATION, CONTACT YOUR DISNEY REPRESENTATIVE.**

## SIGNAGE OPPORTUNITIES FOR DISNEY'S BOARDWALK INN



### PROMENADE FOYER

3004 – Wall Header above Marquee	\$520
3003 – Digital Marquee Surround	\$350
3005 – Wall Graphic, right of Marquee	\$1245

*Note: Availability of locations depicted is not guaranteed due to possible shared use of the meeting space by other groups. Please check with your Disney Representative for availability.*

**PRICING IS SUBJECT TO CHANGE WITHOUT NOTICE.**

**FOR MORE INFORMATION, CONTACT YOUR DISNEY REPRESENTATIVE.**



## SIGNAGE OPPORTUNITIES FOR DISNEY'S BOARDWALK INN



### PROMENADE FOYER DOOR GRAPHICS\*

3006 through 3011 – Foyer Door Medallion Graphics, each door, as shown (3006 partially obstructed) \$230

*\* Other options available. For safety purposes, full coverage of doors requires use of window perf material applied to exterior surface; this is visible from outside only. For other options, please discuss with your Event Consultant.*

*Note: Availability of locations depicted is not guaranteed due to possible shared use of the meeting space by other groups. Please check with your Disney Representative for availability.*

**PRICING IS SUBJECT TO CHANGE WITHOUT NOTICE.**

**FOR MORE INFORMATION, CONTACT YOUR DISNEY REPRESENTATIVE.**

# SIGNAGE OPPORTUNITIES FOR DISNEY’S BOARDWALK INN



## PROMENADE FOYER BALLROOM ENTRANCE

3012 – Ballroom Entrance Header	\$480
3013 – Archway Wall Inset Graphic	\$600

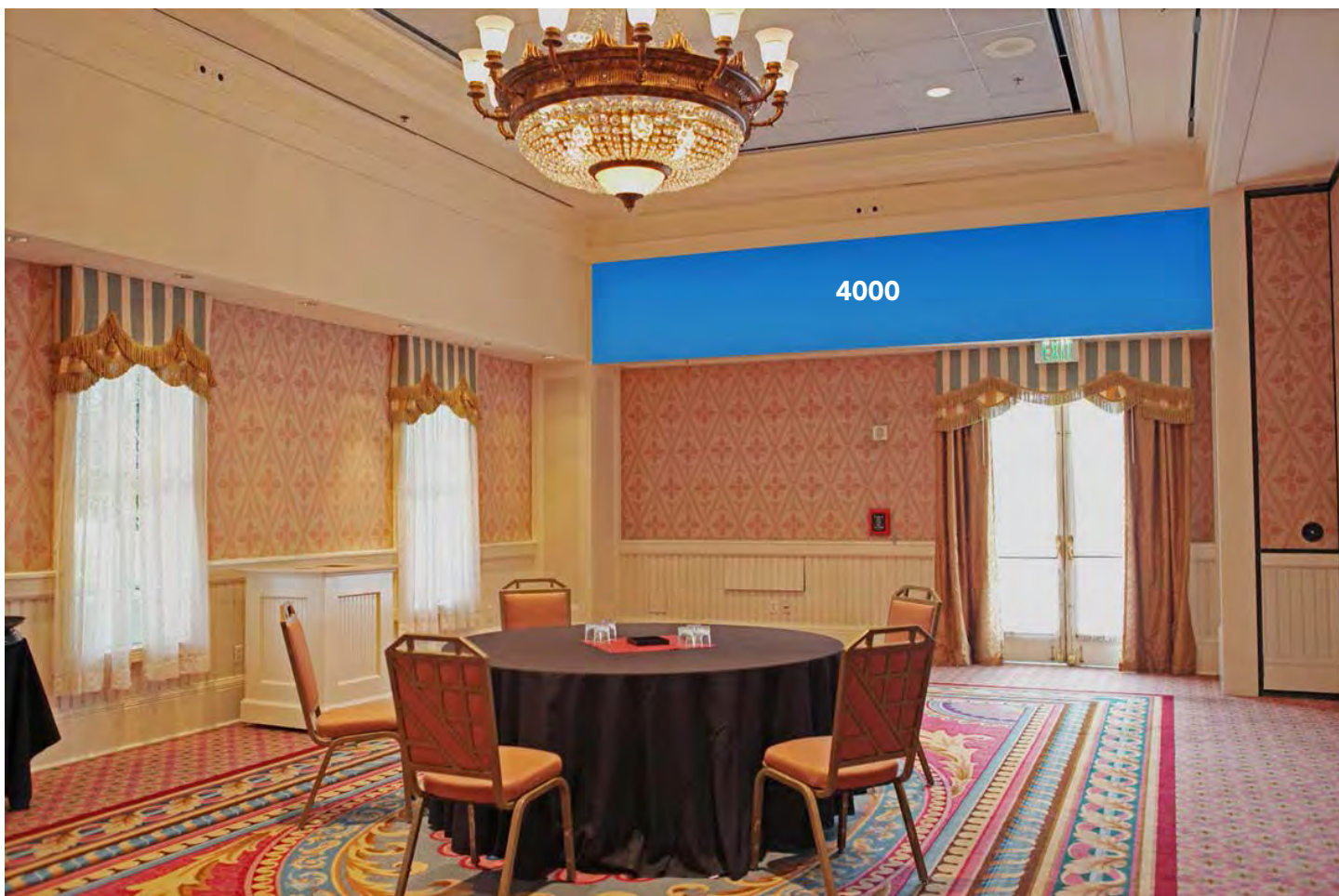
*Note: Availability of locations depicted is not guaranteed due to possible shared use of the meeting space by other groups. Please check with your Disney Representative for availability.*

**PRICING IS SUBJECT TO CHANGE WITHOUT NOTICE.**

**FOR MORE INFORMATION, CONTACT YOUR DISNEY REPRESENTATIVE.**



## SIGNAGE OPPORTUNITIES FOR DISNEY'S BOARDWALK INN



### MARVIN GARDENS & SAINT JAMES INTERIOR HEADER - SHORT WALL

4000 – Interior Header (Available in Marvin Gardens A, B & C and St. James A & B)

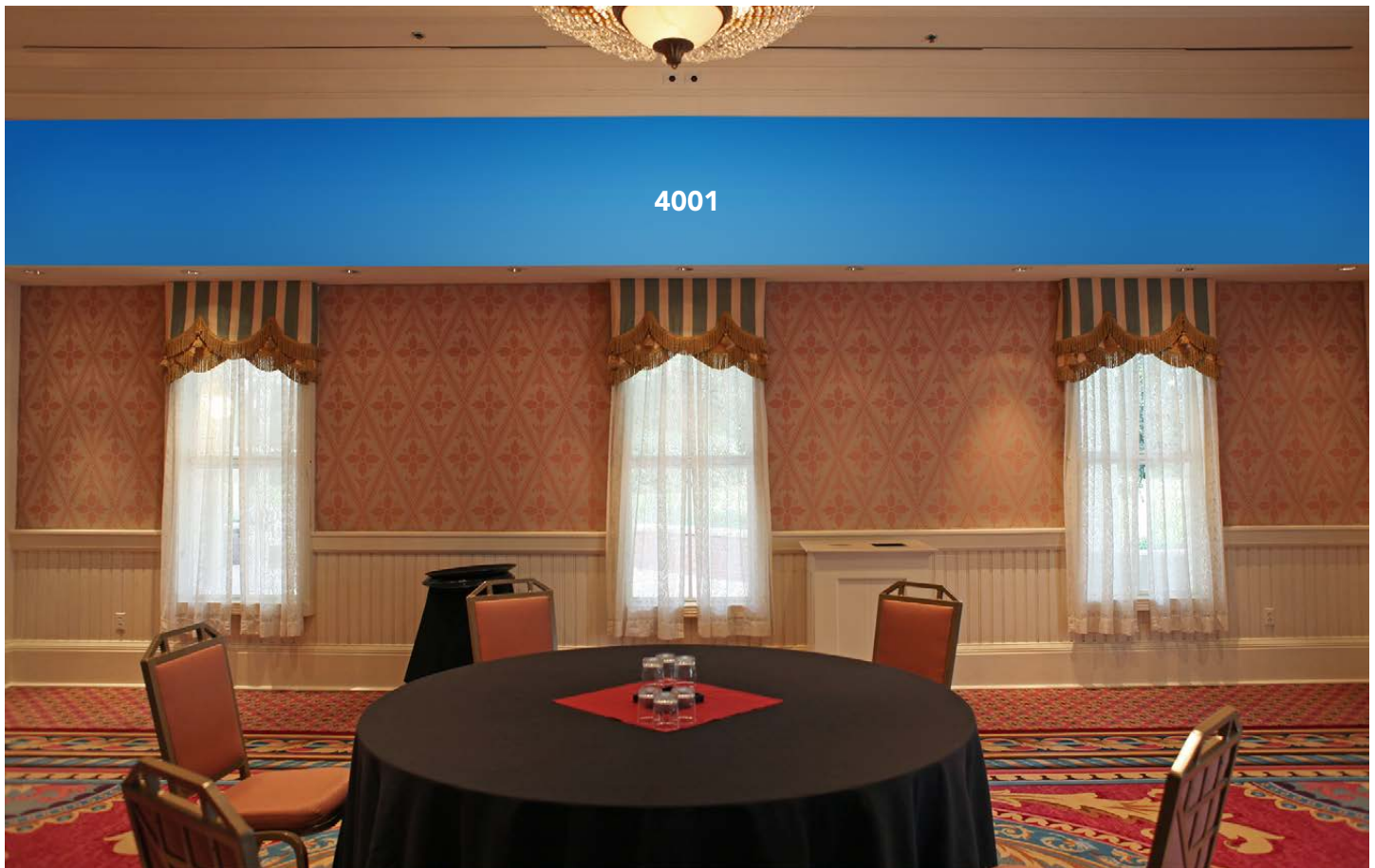
\$1,495

*Note: Availability of locations depicted is not guaranteed due to possible shared use of the meeting space by other groups. Please check with your Disney Representative for availability.*

**PRICING IS SUBJECT TO CHANGE WITHOUT NOTICE.**

**FOR MORE INFORMATION, CONTACT YOUR DISNEY REPRESENTATIVE.**

## SIGNAGE OPPORTUNITIES FOR DISNEY'S BOARDWALK INN



### MARVIN GARDENS & SAINT JAMES INTERIOR HEADER - LONG WALL

4001 – Interior Long Wall Header

\$2,250

*Note: Availability of locations depicted is not guaranteed due to possible shared use of the meeting space by other groups. Please check with your Disney Representative for availability.*

**PRICING IS SUBJECT TO CHANGE WITHOUT NOTICE.**

**FOR MORE INFORMATION, CONTACT YOUR DISNEY REPRESENTATIVE.**



# SIGNAGE OPPORTUNITIES FOR DISNEY'S BOARDWALK INN



## WEST FOYER GRAPHICS

2000 – Foyer Archway Header Hanging Fabric Banner* (only available in West Foyer)	\$1,815
2001 – Archway Wall Inset Graphic	\$595
2002 – Digital Marquee Surround	\$350

\* For safety purposes, hanging banners must be installed by Disney.



### EXPERT TIP

There are seven locations for Archway Wall Inset Graphics throughout Disney's BoardWalk Inn Conference Center. These areas allow plenty of room for posting your event agenda.

Note: Availability of locations depicted is not guaranteed due to possible shared use of the meeting space by other groups. Please check with your Disney Representative for availability.

**PRICING IS SUBJECT TO CHANGE WITHOUT NOTICE.**

**FOR MORE INFORMATION, CONTACT YOUR DISNEY REPRESENTATIVE.**

## SIGNAGE OPPORTUNITIES FOR DISNEY'S BOARDWALK INN



### BOARDWALK EAST & WEST FOYER WINDOW AND DOOR GRAPHICS

2003 – East Foyer Window Graphics, 2 top panes and partial panel below, per window	\$450
2005 – West Foyer Window Graphics (not shown) - full coverage option, per three-pane window	\$540
2004 – Door Graphics, top panes only, per door*	\$540

\* Other options available. For safety purposes, full coverage of doors requires use of window perf material applied to exterior surface; this is visible from outside only. For other options, please discuss with your Event Consultant.

*Note: Availability of locations depicted is not guaranteed due to possible shared use of the meeting space by other groups. Please check with your Disney Representative for availability.*

**PRICING IS SUBJECT TO CHANGE WITHOUT NOTICE.**

**FOR MORE INFORMATION, CONTACT YOUR DISNEY REPRESENTATIVE.**