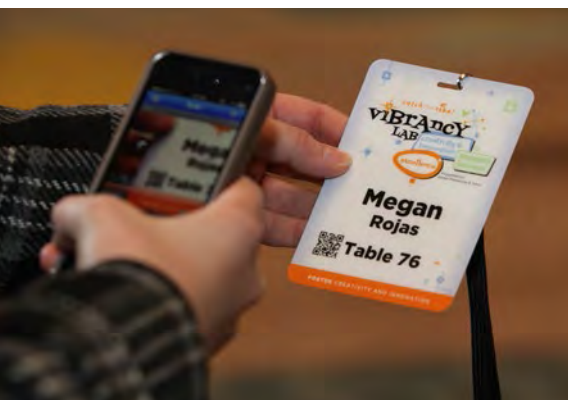




DISNEY'S CONTEMPORARY RESORT



# PROMOTING YOUR BRAND

— BRANDING & SPONSORSHIP OPPORTUNITIES AT DISNEY'S CONTEMPORARY RESORT —



# PROMOTE YOUR BRAND

Increase the visibility of your organization’s brand throughout your event through a wide variety of sign and imaging options. Disney Event Group can also help you create opportunities for potential sponsors at a wide range of exposure.

## CONTENTS

### PRE-EVENT

Brand Your Meeting .....	3
Pre-Event Announcements .....	7

### EVENT

Print Collateral .....	9
On-Screen Communication .....	11
Photography .....	15
Photo Delivery Options.....	19
Photography Enhancements .....	21
Photography Experience .....	22
Photo Borders .....	23
Photography Backdrops .....	24
Event Enhancements.....	27
Charging Furniture .....	30
Charging Stations .....	36
Engagement Tools.....	37

### SIGNAGE

Portable Signage .....	41
Resort-Specific Signage .....	48

Some products within this catalog are accompanied by a QR code. Click on the QR code or scan it using your favorite QR code reader mobile app to view online examples.



### BRAND YOUR MEETING



### BRANDING PACKAGE

Brand your meeting with this cost-effective bundle that includes:

Standard **Themed Event Icon**

Standard **Animated Screen Warmer** (animated version of the event icon)

Themed **PowerPoint or Keynote template**

**Package Price: \$2,995**

**PRICING IS VALID THROUGH SEPTEMBER 30, 2017**

**FOR MORE INFORMATION, CONTACT YOUR DISNEY REPRESENTATIVE.**

### BRAND YOUR MEETING

#### THEMED EVENT ICON

Our Disney designers will collaborate with you to create a custom icon that supports your meeting theme and helps “brand” your meeting. We offer three levels of design.

**Standard:** Includes three (3) initial design concepts and up to two (2) rounds of edits to produce the final design. Standard icons are more simplistic in design.

**\$2,595**



STANDARD

**Enhanced:** Includes five (5) initial design concepts and up to three (3) rounds of edits to produce the final design. Enhanced icons may be more dimensional.

**\$3,195**



ENHANCED

**Complex:** Includes eight (8) initial design concepts and up to five (5) rounds of edits to produce the final design. Complex icons may be more dimensional and/or textured.

**Starting at \$5,000**



COMPLEX

*If Stock Art elements are used in the design, they will be licensed to your organization so that the design may be used in other materials produced by your team.*

**PRICING IS VALID THROUGH SEPTEMBER 30, 2017**

**FOR MORE INFORMATION, CONTACT YOUR DISNEY REPRESENTATIVE.**



### BRAND YOUR MEETING

#### ANIMATED SCREEN WARMER

We'll collaborate with you to build a looping video with full motion graphics utilizing your organization's logo or event theme and icon. These 15-30 second video loops can be used for walk-in, during breaks, and other transitional moments during your event.



SCAN OR CLICK

**Standard:** Your logo or event icon is enhanced with subtle shimmer and movement effects.  
**\$995**

**Enhanced:** Your logo or event icon is animated with increased motion and enhancements such as dimensional effects, build-in of elements, and multiple camera angles.  
**\$1,800**

**Complex:** We will work with you to build a truly customized screenwarmer based on your logo or event icon, featuring dynamic, eye-popping graphics and special effects.  
**See your Disney Representative for a custom quote.**

**PRICING IS VALID THROUGH SEPTEMBER 30, 2017**

**FOR MORE INFORMATION, CONTACT YOUR DISNEY REPRESENTATIVE.**

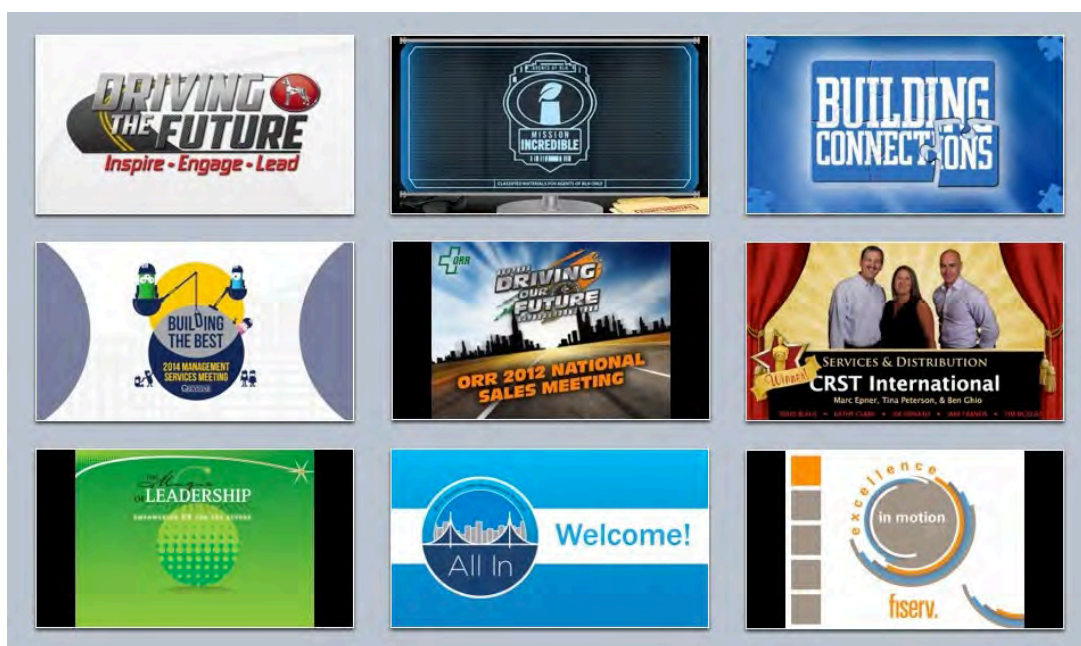
## PRE-EVENT

### BRAND YOUR MEETING

## THEMED POWERPOINT/KEYNOTE TEMPLATE

We will create a custom template themed to your event. The template will contain title, text and graphic slides.

**\$750**



Presentation Design services are also available.

*If Stock Art elements are used in the design, they will be licensed to your organization so that the design may be used in other materials produced by your team.*

**PRICING IS VALID THROUGH SEPTEMBER 30, 2017**

**FOR MORE INFORMATION, CONTACT YOUR DISNEY REPRESENTATIVE.**

### PRE-EVENT ANNOUNCEMENTS

#### SAVE-THE-DATE STATIC GRAPHIC

Generate excitement and create a buzz about your upcoming event.

Includes a themed graphic embedded in an email message to your prospective attendees. Clicking on the graphic opens the viewer's Internet browser and links them to your website or registration page.

**\$1,500** – Production time: 1 week



SCAN OR CLICK

#### SAVE-THE-DATE MOTION GRAPHIC

Clicking on an embedded email graphic opens the viewer's Internet browser and plays a high-energy motion graphics video with music and sound effects. The video is up to 60 seconds in duration, and is designed to complement your meeting theme and deliver your key pre-event messages.

**\$6,000** – Production Time: 2 – 3 weeks



SCAN OR CLICK

*If Stock Art elements are used in the design, they will be licensed to your organization so that the design may be used in other materials produced by your team.*

*Disney will deliver the Save-the-Date content to the client. Client shall be responsible for distribution.*

**PRICING IS VALID THROUGH SEPTEMBER 30, 2017**

**FOR MORE INFORMATION, CONTACT YOUR DISNEY REPRESENTATIVE.**

## PRE-EVENT ANNOUNCEMENTS

### ANNOUNCEMENT VIDEO



**Standard** *Walt Disney World® Resort* – Announce your upcoming meeting at the *Walt Disney World® Resort* with this budget-friendly, pre-produced Announcement Video that highlights the many exciting things your attendees may enjoy during their visit. Price includes a customized ending graphic that displays the event name and year in fireworks above Cinderella Castle.\*

Approximate Length 1:30

**\$2,000** – Production Time: 1 week



SCAN OR CLICK

**Enhanced** *Walt Disney World® Resort* – This video is a great choice when you want to announce to your group that their next big gathering will take place at the *Walt Disney World® Resort*. Enhance the above Standard Video by adding a Google Earth Zoom Effect to travel from your current meeting location to the *Walt Disney World® Resort*. Plus, add specific Disney Resort footage and a closing slide that delivers specific Save the Date messaging.\*

Approximate Length 2:00 minutes

**\$3,000** – Production Time: 2 weeks



SCAN OR CLICK

**Custom** *Walt Disney World® Resort* – We will work hand-in-hand with your meeting team to create a video announcement specific to your group and its needs. Let our video experts help you craft an exciting, customized message that highlights the themes, goals and incentives that are important to you. Options range from customized scripting and voice-overs to special video shoots involving magical Disney Character appearances and your leaders, shot within the *Walt Disney World®* theme parks and resorts.\*

**Starting at \$5,000** – Production Time: 2 – 4 weeks



SCAN OR CLICK

*\*Disney will deliver the Announcement Video content to the client. Client shall be responsible for distribution. Please note that the Disney copyrighted content in this video has not been cleared for distribution outside of client's organization.*

*If Stock Art elements are used in the design, they will be licensed to your organization so that the design may be used in other materials produced by your team.*

**PRICING IS VALID THROUGH SEPTEMBER 30, 2017**

**FOR MORE INFORMATION, CONTACT YOUR DISNEY REPRESENTATIVE.**



## PRINT COLLATERAL

### CREDENTIALS

Provide your attendees with a themed event credential. These are up to 3.5" x 5.5" and may be personalized with the attendee's information (e.g. name, title, etc.) on the front and agenda on the back, complete with a sponsor's logo or message. Comes with a black, .75" break-away lanyard.\*

**\$2,000** – Up to 100 Credentials (includes design and printing)

**\$5.50** each for additional credentials - volume discounts available for quantities over 750.

\* Upgrade to a custom one-color imprint lanyard available for an additional \$1 each.



### CUSTOM EVENT MAPS

Our custom event maps make it easy for your guests to navigate your special event in the Park while reinforcing your brand or event sponsor. They include an event schedule, locations of available attractions and locations of guest amenities. Maps are single-sided, 8.5" x 11", includes up to 2 revision cycles.

**\$1,550** – Qty. 200 Maps (includes design and printing)

**\$1.50** each for additional maps\*

\* Discounted pricing available for larger (1000+) quantities.



PRICING IS VALID THROUGH SEPTEMBER 30, 2017

FOR MORE INFORMATION, CONTACT YOUR DISNEY REPRESENTATIVE.

## PRINT COLLATERAL

## LOGOVISION GLASSES (WITH CUSTOM LOGO LENSES AND FRAMES)

See your brand everywhere and even turn our elaborate Disney fireworks display into a custom branded experience for your guests. These magical glasses turn every bright point of light into your illuminated logo or name.\*

The printed frames are a great opportunity to recognize sponsors or deliver additional printed messaging.

**Qty. 500 – \$9.42 each**

**Qty. 800 – \$5.90 each**

**Qty. 1,000 – \$4.71 each**

**Qty. 1,500 – \$3.42 each**

**Qty. 2,000 – \$2.96 each**

**Qty. 2,500 – \$2.53 each**



*\* Custom LogoVision lens is limited to eight (8) characters or a simple logo symbol. Contact your event consultant for more information.*

*Please allow a minimum of four (4) weeks to produce LogoVision with Custom Logo Lenses.*

**PRICING IS VALID THROUGH SEPTEMBER 30, 2017**

**FOR MORE INFORMATION, CONTACT YOUR DISNEY REPRESENTATIVE.**

## ON-SCREEN COMMUNICATION

## POWER LOGO OPENER



Kick off your meeting and inspire pride in your attendees with a high-energy animated reveal of your organization's logo. This creative opening video delivers a big impact without a big cost, and with little planning on your part. Using motion graphics, sound effects and driving music, we create a high-impact 45-60 second "Opener" that morphs from your event icon into your logo. As the opener ends, your logo lands dramatically in the center of the screen. The final effects reverberate around the room and your executive enters with the huge on-screen logo as the backdrop for his/her welcoming remarks.

- Starts with your themed event icon (client-provided)
- Ends dramatically on your company logo (client-provided)
- We create the energy and dynamic imagery in-between

**\$6,000** (\$5,500 if bundled with the Branding Package)



SCAN OR CLICK

**PRICING IS VALID THROUGH SEPTEMBER 30, 2017**

**FOR MORE INFORMATION, CONTACT YOUR DISNEY REPRESENTATIVE.**

## ON-SCREEN COMMUNICATION

## HAND-SKETCHED ANIMATION VIDEO



Looking for an original and fun way to reach your audience? Let Disney help tell your story with our Hand-Sketched Animation Videos. These videos incorporate the rich tradition of Disney storyboarding and animation to deliver your message in an easy-to-understand, visual way. They can increase retention by simplifying complex processes. They can be used to tell a story, provide a testimonial, or as a pre-event email blast to promote your upcoming meeting. Pricing is based on a 60-second video and includes script support, storyboards, professional narration, music from our licensed library and sound effects.

**Price: \$3,500**

Each additional minute: \$950

**PRICING IS VALID THROUGH SEPTEMBER 30, 2017**

**FOR MORE INFORMATION, CONTACT YOUR DISNEY REPRESENTATIVE.**



### ON-SCREEN COMMUNICATION

#### BRANDED AWARDS PACKAGE

Celebrate your top achievers with an awards package customized for your needs and brand. We start by designing your awards theme. We'll work closely with you to identify your awards event's character and personality to correctly align the design with your organization's identity or, if you'd prefer, we can create something totally unique and different. Once your Awards title has been translated into a beautiful graphic representation we'll use it as the foundation for the design of your screenwarmer and presentation.

##### Package includes:

- A designed Award text/graphic/icon treatment
- A screenwarmer loop (your awards graphic with animated highlights and gleams)
- Themed awards presentation (PowerPoint or Keynote)

**Package price: \$2,995**

##### Enhancements to this package include:

- A Virtual Awards Environment – **\$5,995**

For events that have a wide-screen AV Package, we can create a graphic environment that has all of the realism and dimension of a traditional three-dimensional set but with a significant cost savings advantage. Includes three (3) subtle animated effects.



- Step and Repeat Photo Backdrop – **\$1,835**
- Posters, Floor Graphics and Banners – Please consult with your Disney Event Representative to discuss pricing for these enhancements.



**PRICING IS VALID THROUGH SEPTEMBER 30, 2017**

**FOR MORE INFORMATION, CONTACT YOUR DISNEY REPRESENTATIVE.**



## ON-SCREEN COMMUNICATION

### DIGITAL SIGNAGE PACKAGE

Provide dynamic, eye-catching signage with this Digital Signage package that integrates full-motion graphics, real-time clock, and scheduled event and sponsor announcements. No wi-fi required. Can be custom-branded to your event. Easy, seamless content updating ensures that your attendees have the latest updates.

#### Package includes:

- Consultation and creative direction
- Full-motion graphics development from storyboarding through delivery
- Assistance in planning and formatting your content
- Rental of all monitors, stands, and playback devices for the duration of your event

#### Price per event:

- Package of 3 monitors - **\$14,000**
- Package of 5 monitors - **\$19,000**



**PRICING IS VALID THROUGH SEPTEMBER 30, 2017**

**FOR MORE INFORMATION, CONTACT YOUR DISNEY REPRESENTATIVE.**

## PHOTOGRAPHY

## CANDID DOCUMENTATION PACKAGE

Capture speakers, candid, and general event coverage.  
This package is intended for documentation purposes only.

**Package includes:**

- Photographer
- Microsite with unlimited downloads, or USB drive

**Best for:**

- Candid shots
- Up to 30 people informal group shot

**Prices starting at:**

- Up to 2 hours - **\$400**
- Up to 3 hours - **\$525**
- Up to 4 hours - **\$650**

*Rush fee for delivery within same day to 24 hours- **\$200***

*Rush fee for delivery within 24 to 48 hours- **\$100***

*Confirmed photography cancelled less than seven (7) days out - **50% cancellation fee***



**FOR ADDITIONAL ENHANCEMENTS  
PLEASE CLICK HERE**

**PRICING IS VALID THROUGH SEPTEMBER 30, 2017**

**FOR MORE INFORMATION, CONTACT YOUR DISNEY REPRESENTATIVE.**

## PHOTOGRAPHY

## SOCIAL MEDIA CAPTURE PACKAGE

Capture fun images with our tablet-based camera system designed to engage your attendees. Once the photo is captured, it will be emailed immediately to the attendee.

**Package includes:**

- Photographer
- Equipment (tablet)
- Graphic border (standard)

**Prices starting at:**

- Up to 2 hours - **\$290**
- Up to 3 hours - **\$340**
- Up to 4 hours - **\$390**

*Add a customized border with your company logo and your event theme - **\$200***

*To add all images taken at the event to the microsite 48 hours after the event - **\$200***



**FOR ADDITIONAL ENHANCEMENTS  
PLEASE CLICK HERE**

**PRICING IS VALID THROUGH SEPTEMBER 30, 2017**

**FOR MORE INFORMATION, CONTACT YOUR DISNEY REPRESENTATIVE.**

## PHOTOGRAPHY

### GROUP PHOTO PACKAGE

Create an event keepsake with a Group Photo. We can coordinate a unique pose with pre-planning.

#### Package includes:

- Photographer and an assistant
- High resolution group photo for up to 200 people
- Professional lighting/risers
- Graphic border (standard)
- Photo approval from client
- Microsite with unlimited downloads, or USB drive

1 hour experience - **\$450**

*Depending upon group size and location, a lift for the photographer may be required for an additional fee of \$125. Please discuss location with your Disney Representative to determine the optimum spacing and set-up for your group photo.*

#### Limited Availability: Magic Kingdom East Lawn Plaza

This is a special opportunity with very limited availability due to park operating requirements and equipment needed.

- Call for availability
- Only available from 7 - 7:30 AM on select days
- Photo can include group of up to 50 people
- Professional lighting/risers are required and included

Magic Kingdom Group Photo - **\$600**

Rush fee for delivery within same day to 24 hours- **\$200**

Rush fee for delivery within 24 to 48 hours- **\$100**

Confirmed photography cancelled less than seven (7) days out - **50% cancellation fee**



**Standard Border**



**Custom Border**

**FOR STANDARD BORDER OPTIONS  
PLEASE CLICK HERE**

**FOR ADDITIONAL ENHANCEMENTS  
PLEASE CLICK HERE**

**PRICING IS VALID THROUGH SEPTEMBER 30, 2017**

**FOR MORE INFORMATION, CONTACT YOUR DISNEY REPRESENTATIVE.**



## PHOTOGRAPHY

## ON-LOCATION STUDIO PACKAGE

Disney's On-Location Studio offers you a variety of options when it comes to the planned photographs you want to capture. Whether you are looking for arrival photos, awards night "step and repeat," group shots, individual pictures, or character photos, Disney's On-Location Studio has you covered.

**Package includes:**

- Photographer and an assistant
- Professional lighting
- Microsite with unlimited downloads, or USB drive
- *Standard backdrops*

**Prices starting at:**

- Up to 2 hours - **\$525**
- Up to 3 hours - **\$660**
- Up to 4 hours - **\$840**
- On Location Studio Package with Candid Documentation (up to 2 hours) - **\$640**
- On Location Studio Package with Green Screen (up to 2 hours) - **\$625**

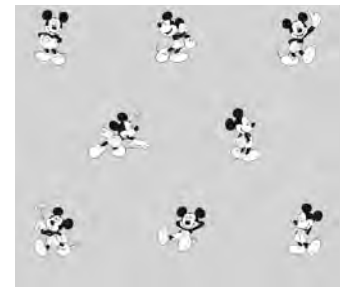
**Best for:**

- Professional headshots
- Formal group shot (up to 30 people)
- Use with a custom step and repeat backdrop or the Mickey Step and Repeat (as shown)
- Character experience with appropriate character backdrop (provided by Entertainment)

*Rush fee for delivery within same day to 24 hours- **\$200***

*Rush fee for delivery within 24 to 48 hours- **\$100***

*Confirmed photography cancelled less than seven (7) days out - **50% cancellation fee***

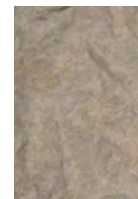


**Mickey Step and Repeat Backdrop**

- Not Available for use with Disney Characters -



**Blue**



**Gray**



**Old Master**

**FOR ADDITIONAL ENHANCEMENTS  
PLEASE CLICK HERE**

**PRICING IS VALID THROUGH SEPTEMBER 30, 2017**

**FOR MORE INFORMATION, CONTACT YOUR DISNEY REPRESENTATIVE.**



## PHOTO DELIVERY OPTIONS

### PRINT ON LOCATION STUDIO

Offer your attendees prints immediately on site. Includes a photographer, two assistants, a printer and 6" x 8" prints in paper folders.

Based on a 2-hour event, each On-Location Studio can accommodate up to approximately 120 people.

**\$1,500** – 2 hours/per On-Location Studio

*Any custom frames that are provided by the Client or WDW Floral need to be approved by the Photography team in advance.*



### A LA CARTE PRINTS

8" x 10" - **\$22**

6" x 8" - **\$15**

*Rush fee for delivery within same day to 24 hours- **\$200***

*Rush fee for delivery within 24 to 48 hours- **\$100***

*Confirmed photography cancelled less than seven (7) days out - **50% cancellation fee***

### DISNEY PHOTOPASS® WITH UNLIMITED DIGITAL DOWNLOADS

Offer your attendees the Disney PhotoPass® service. Includes PhotoPass® cards, an easy-to-use online service to view, organize, share, customize, download, and order prints of favorite photos.

*Disney PhotoPass® Service is available for On-Location Studio and Virtual Backdrop packages only.*

**\$399** per event



**PRICING IS VALID THROUGH SEPTEMBER 30, 2017**

**FOR MORE INFORMATION, CONTACT YOUR DISNEY REPRESENTATIVE.**

## PHOTO DELIVERY OPTIONS

## PHOTO MONTAGE



A conference highlights photo montage is a great way to engage your attendees during the conference. It can be played daily on a monitor in the foyer near your coffee bar, on your big general session screen as a “walk-in loop,” or during your closing session. It can even be sent out digitally, post-event, via an email link. Price includes a music track from our stock library. Title slides with the sponsor’s logo can be inserted into the montage recognizing the sponsors of various functions, or acknowledging an exclusive sponsor for the entire montage.

**\$950** – Standard Photo Montage, 3-minute duration (*about 60 images*)

**\$1,150** – Enhanced Photo Montage, 5-minute duration (*about 100 images*)

*Photography not included.*

*Please discuss your needs with your Disney Representative to determine photography pricing.*



SCAN OR CLICK

**PRICING IS VALID THROUGH SEPTEMBER 30, 2017**

**FOR MORE INFORMATION, CONTACT YOUR DISNEY REPRESENTATIVE.**

## PHOTOGRAPHY ENHANCEMENTS

### CANDID DOCUMENTATION — ADD-ONS

- Additional Candid Photographer (up to 2 hours) - **\$200**
- Add an additional hour - **\$125**
- Add a Studio (up to 2 hours) - **\$300 each**
- Add a FORMAL group photo (up to 30 people) - **\$100**
- Add "print on site" (print 6" x 8", up to 2 hours) - **\$1,500**
- 6" x 8" prints - **\$15 each**
- Additional disc or USB drive - **\$100 each**
- Retouch up to 30 images - **\$100**

RETURN TO  
CANDID DOCUMENTATION

### ON LOCATION STUDIO — ADD-ONS

- Additional Candid Photographer (up to 2 hours) - **\$200**
- Add an additional hour - **\$125**
- Add a Studio (up to 2 hours) - **\$300 each**
- Add a FORMAL group photo (up to 30 people) - **\$100**
- Add "print on site" (print 6" x 8", up to 2 hours) - **\$1,500**
- 6" x 8" prints - **\$15 each**
- 8" x 10" prints - **\$22 each**
- Additional disc or USB drive - **\$100 each**
- Retouch up to 30 images - **\$100**

RETURN TO  
ON-LOCATION STUDIO

### GROUP PHOTO PACKAGE — ADD-ONS

- Additional Candid Photographer (up to 2 hours) - **\$200**
- Add a Studio (up to 2 hours) - **\$300 each**
- 8" x 10" prints - **\$22 each**
- Additional disc or USB drive - **\$100 each**
- Retouch up to 30 images - **\$100**

RETURN TO  
GROUP PHOTO PACKAGE

PRICING IS VALID THROUGH SEPTEMBER 30, 2017

FOR MORE INFORMATION, CONTACT YOUR DISNEY REPRESENTATIVE.

## PHOTOGRAPHY EXPERIENCE

### STEP INTO THE SCENE: A PHOTO EXPERIENCE

Turn your themed party into an interactive experience for everyone! This photography package paints a storybook experience that everyone will enjoy and remember. Once everyone has decked themselves out in outfits, they join their friends center stage as the stars of this "film shoot." Then the Disney photographer takes over, directing everyone in his/her own story. The result is a wonderful photograph capturing your guests having the time of their lives.

Pricing includes photography and on-site photo prints, green screen backdrops, costume overlays and small, hand-held props for a number of interactive themes. We recommend one **Step Into The Scene** setup for every 200 guests.

Available themes include:

- Wild, Wild West
- Pirate Adventure
- Sport Themes
- 50's Sock Hop
- Fun in the Sun Beach Scene
- Villains

Up to 2 hours - **\$4,995** per set-up

*Custom-themed experiences beyond those listed above are available for an additional \$2,000.*

*Full set decor package (as pictured above) available for an additional \$1,000.*



**Standard Theme**

**- No decor - costumes and hand props only -**



**Standard Theme**

**- With full set decor package added -**

**PRICING IS VALID THROUGH SEPTEMBER 30, 2017**

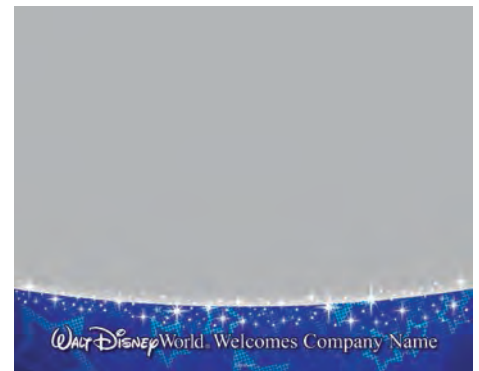
**FOR MORE INFORMATION, CONTACT YOUR DISNEY REPRESENTATIVE.**

## PHOTO BORDERS

### EVENT PHOTO BORDER OPTIONS

As part of your package we can enhance your group photo with a border. Choose from our collection of themed borders, and we can also include your group name and/or organization/event logo.

*To better fit your theme, fully customized borders are available - **\$200***



RETURN TO  
SOCIAL MEDIA PACKAGE

RETURN TO  
GROUP PHOTO PACKAGE

PRICING IS VALID THROUGH SEPTEMBER 30, 2017

FOR MORE INFORMATION, CONTACT YOUR DISNEY REPRESENTATIVE.



## PHOTOGRAPHY BACKDROPS

### STEP & REPEAT PHOTO BACKDROP

Our step & repeat backdrop uses your event icon or organization's logo to make a perfect backdrop for your attendees to be photographed during your special event. Our price includes design, printing of a non-glare fabric backdrop, frame rental, set-up and removal.

**\$1,835 each** – 12' x 8' backdrop with frame rental

*Photography not included.*

*Pricing for indoor use only. For outdoor solutions, please discuss your needs with your Disney Representative to determine pricing.*



**PRICING IS VALID THROUGH SEPTEMBER 30, 2017**

**FOR MORE INFORMATION, CONTACT YOUR DISNEY REPRESENTATIVE.**

## PHOTOGRAPHY BACKDROPS

### VIRTUAL BACKGROUND

Introducing our new, virtual background technology. Now, Disney Fine Art Photography can take your picture and drop you and your guests into a variety of locations at the click of a button. Choose from a variety of stock images or work with our talented artists to create a custom background for your group.

These images can be delivered via Disney Photopass®, microsite, or print-on-location studio.

Please note: the Disney Fine Art Photography Virtual Reality Screen can accommodate up to 100 people per hour.

#### Package includes:

- Photographer with camera
- Virtual Screen
- Digital imaging equipment
- Mini projector
- Hand-held props (no costumes included)

#### Prices starting at:

- Up to 2 hours - **\$4,995**
- Up to 3 hours - **\$5,150**
- Up to 4 hours - **\$5,305**

*Custom Graphic/Photo Design - **\$2,000***

*Costuming Package - **\$1,000***



**PRICING IS VALID THROUGH SEPTEMBER 30, 2017**

**FOR MORE INFORMATION, CONTACT YOUR DISNEY REPRESENTATIVE.**

## PHOTOGRAPHY BACKDROPS

### AUGMENTED REALITY EXPERIENCE



### ANIMATED PHOTO BACKDROP

Your guests will have tons of fun getting their picture taken in front of a custom animated photo backdrop. The backdrop looks like one of your regular event branded signs, but when users view it on their mobile device using the free Aurasma app\*, the background comes to life, creating an opportunity to reinforce your brand and deliver your messaging in a unique and creative way.

**\$5,900** – 12' x 8' Photo backdrop with a 20-second augmented reality experience



SCAN OR CLICK

### AUGMENTED REALITY EXPERIENCES

**\$4,000** – Additional 20-second Augmented Reality experiences based on an existing graphic “trigger image” (for example, turn your logo into a trigger image that launches your latest video or plays a custom animation).

*\* Requires the use of the free Aurasma app for iPhone and Android devices, available online from the App Store and Google Play.*

**PRICING IS VALID THROUGH SEPTEMBER 30, 2017**

**FOR MORE INFORMATION, CONTACT YOUR DISNEY REPRESENTATIVE.**

## EVENT ENHANCEMENTS

### PAPER BEVERAGE NAPKINS

Provide visibility to your logo or message right in the palm of your Guests' hands with branded paper beverage napkins in beverage or hors d'oeuvre size! Available in single color foil imprint in a rainbow of napkin colors, or full color logo on white or ivory napkins. Printable size allows for one logo and up to two lines of text depending on size of messaging.

**\$75+** – Box of 50 napkins (one color logo/ordered in boxes of 50 per logo).  
Volume price breaks are available based on increments of 50.

+ Plus 6.5% sales tax. Subject to change without notice.  
Please allow two weeks for production or more depending on quantities purchased.



### PILLOWS

Primo leather-like fabric is screened with your logo or event icon with the utilization of heat infusion. The best part: these pillows are yours to keep! Color options based on lead time and quantity; please discuss the right colors for you based on your logo colors with your Disney Representative.

**\$75+** – Per Pillow (plus \$75 one-time art fee per logo).

+ Plus 6.5% sales tax. Subject to change without notice.  
Please allow two weeks for production or more depending on quantities purchased.



### ACRYLIC PARTY PASS

Clear acrylic is etched as a "pendant" for your guests to wear with your logo or event icon. An LED light attached to the neck cord allows your message to glow. This item is the perfect favor for your Guests to provide them the backstage pass to party!

**\$10.75+** – Per Pass (plus \$75 one-time art fee per logo).

Additional enhancements such as LED light colors, colored party passes, etc. are available.

+ Plus 6.5% sales tax. Subject to change without notice.  
Please allow two weeks for production or more depending on quantities purchased.



**PRICING IS VALID THROUGH SEPTEMBER 30, 2017**

**FOR MORE INFORMATION, CONTACT YOUR DISNEY REPRESENTATIVE.**



## EVENT ENHANCEMENTS

### CHOCOLATE AMENITY

This is certainly a delicious treat for your Guests! Four assorted truffles sit in a hexagon-shaped chocolate box. The chocolate box is screened with your logo or event icon. Even the box itself is edible as it's also made out of chocolate! The entire amenity is wrapped in cellophane with your choice of color of ribbon tie.

**\$14.25+** – Per Amenity not including hotel delivery to the Guest rooms.

+ Plus 6.5% sales tax. Subject to change without notice.  
Please allow two weeks for production or more depending on quantities purchased.



### ACRYLIC CENTERPIECES

Allow your logo or event icon to shine as the center of attention at each table! Clear acrylic etched with your brand shines with LED light. Additional options such as alternative shapes, colors, floral accents around the centerpieces and even lighting programming are available.

Please ask your Disney Representative for a quote based on table size, logo shape and color needs!



### ICE

Your brand is “frozen” in time with a cool way to serve drinks! Ice bars and ice luges are a unique way to show your logo or event icon. Even as simple as an etched sculpture rather than a bar or luge, this option creates a unique showstopper! Starting fees are below; additional enhancements such as colored uplighting, colored logos within the ice, and combination ice bar with ice luge are available.

**\$1,180+** – Single Ice Sculpture, Luge, or Block (plus \$200 delivery fee).

**\$3,675+** – Single Ice Bar (plus \$200 delivery fee).

+ Plus 6.5% sales tax. Subject to change without notice.  
Please allow two weeks for production or more depending on quantities purchased.



**PRICING IS VALID THROUGH SEPTEMBER 30, 2017**

**FOR MORE INFORMATION, CONTACT YOUR DISNEY REPRESENTATIVE.**

## EVENT ENHANCEMENTS

### GEO GLOW HIGH BOYS

Beautiful illuminated acrylic high boy tables are a unique alternative to traditional reception tables. These tables can rotate in an array of colors throughout the evening, set to stay on any one desired color, or be customized to change preferred colors to compliment your theme. In addition, your company logo or even icon can be screened on the tops of the high boys to literally illuminate your brand!

**\$113+** – Per GEO High Boy Table are for one day rental (*plus a \$200 one-time delivery fee*).

This includes single color lighting or random rotation of glow throughout the LED light spectrum.

Please ask your Disney Representative for additional quotes on choreographed lighting programming.

**\$95+** – Per table for clear static cling branding on top of the high boy surface (*plus a one time \$75 art fee per logo/image*).

*The printing dimensions are 22.25"Wx41.25"H.*

*A 300 dpi eps version of your logo or icon is required in vector format at least 15 working days prior to the event for production.*

*+ Plus 6.5% sales tax. Subject to change without notice.*



**PRICING IS VALID THROUGH SEPTEMBER 30, 2017**

**FOR MORE INFORMATION, CONTACT YOUR DISNEY REPRESENTATIVE.**

## CHARGING FURNITURE

Charging Furniture options start as small as a single chair and can grow as large as your imagination and budget allows. As an additional option, sponsors can participate in these options by providing branding icons or messaging printed directly on furniture backs, charging swing table tops, or as vinyl wraps placed on highlighted flat surfaces. Please work with your Disney Representative to discuss locations and spacing needs.

*Pricing does not include: a \$75 art set-up fee per logo/message, a \$200/\$400 delivery fee pending quantity of items requested, or any optional underlighting on soft seating décor.*

## LOCKING CELL PHONE CUBE WITH DUAL VIDEO SCREENS (RENTAL)

Plug it in...lock it up...walk away. Come back to a full charge! This charging locker consists of 24 units that keep coveted mobile devices safe and secure via a digital lock. Each locker has a universal fast charging cord that fits all major cell phones and tablets. TV monitors and side panels offer a great branding opportunity for your organization or your sponsors.

	Multi*	Single
Without graphics	<b>\$3,498+</b>	<b>\$2,332+</b>
1-side graphics	<b>\$3,598+</b>	<b>\$2,432+</b>
2-side graphics	<b>\$3,698+</b>	<b>\$2,532+</b>
3-side graphics	<b>\$3,798+</b>	<b>\$2,632+</b>
4-side graphics	<b>\$3,898+</b>	<b>\$2,732+</b>

+ Indicates sales tax (currently 6.5%). Taxes are subject to change without notice.

\* Multi-day rate = rental period of up to 7 days

Requires 20 amps of power

This option is also available without video screens.  
See your Disney Representative for options and pricing.



**PRICING IS VALID THROUGH SEPTEMBER 30, 2017**

**FOR MORE INFORMATION, CONTACT YOUR DISNEY REPRESENTATIVE.**

## CHARGING FURNITURE

## GEO CHARGING HIGHBOY (RENTAL)

Multi*	Single	
Without graphics	<b>\$375+</b>	<b>\$250+</b>
1-side graphics	<b>\$470+</b>	<b>\$345+</b>
2-side graphics	<b>\$565+</b>	<b>\$440+</b>
3-side graphics	<b>\$660+</b>	<b>\$535+</b>
4-side graphics	<b>\$755+</b>	<b>\$630+</b>

+ Indicates sales tax (currently 6.5%). Taxes are subject to change without notice.

\* Multi-day rate = rental period of up to 7 days

Requires 5 amps of power

Pricing does not include seating



PRICING IS VALID THROUGH SEPTEMBER 30, 2017

FOR MORE INFORMATION, CONTACT YOUR DISNEY REPRESENTATIVE.



## CHARGING FURNITURE

### CONVERSATION CHARGING TABLE - LOW HEIGHT (RENTAL)

*Includes Four Clear Flex Chairs and  
Black or White Chair Pads*

	Multi*	Single
Rental	<b>\$600+</b>	<b>\$400+</b>

+ Indicates sales tax (currently 6.5%). Taxes are subject to change without notice.

\* Multi-day rate = rental period of up to 7 days

Requires 5 amps of power

Available with a "woodgrain" or white top

Other colors of chair pads available for an additional charge



### CONVERSATION CHARGING TABLE - HIGH BOY SIZE (RENTAL)

*Includes Four Clear Flex Swivel Stools and  
Black or White Chair Pads*

	Multi*	Single
Rental	<b>\$750+</b>	<b>\$500+</b>

+ Indicates sales tax (currently 6.5%). Taxes are subject to change without notice.

\* Multi-day rate = rental period of up to 7 days

Requires 5 amps of power

Available with a "woodgrain" or white top

Other colors of chair pads available for an additional charge



**PRICING IS VALID THROUGH SEPTEMBER 30, 2017**

**FOR MORE INFORMATION, CONTACT YOUR DISNEY REPRESENTATIVE.**

## CHARGING FURNITURE

## CONVERSATION CHARGING TABLE WITH SIX LOCKERS (RENTAL)

	Multi*	Single
Rental	<b>\$900+</b>	<b>\$600+</b>

+ Indicates sales tax (currently 6.5%). Taxes are subject to change without notice.

\* Multi-day rate = rental period of up to 7 days

Requires 5 amps of power

Charging ability only available on the top of the table



## SEVEN-SECTION L COUCH (RENTAL)

In White, Black, Espresso Brown or Red with  
Two Executive Lighted Towers and Two Charging Swing Tables

	Multi*	Single
Without Graphics	<b>\$2,070+</b>	<b>\$1,380+</b>
1 side of graphic per executive tower	<b>\$2,150+</b>	<b>\$1,460+</b>
2 sides of graphic per executive tower	<b>\$2,230+</b>	<b>\$1,540+</b>

+ Indicates sales tax (currently 6.5%). Taxes are subject to change without notice.

\* Multi-day rate = rental period of up to 7 days

Requires 20 amps of power

Charging tables include charging ability with a multi-adapter

Other colors of seating available for an additional charge



PRICING IS VALID THROUGH SEPTEMBER 30, 2017

FOR MORE INFORMATION, CONTACT YOUR DISNEY REPRESENTATIVE.

## CHARGING FURNITURE

## TWELVE-SECTION FULL MOON CHARGING STATION (RENTAL)

*In White, Black, Espresso Brown or Red with 6 Charging Swing Tables*

This charging configuration consists of 12 seats and 6 charging swing tables. Each charging table offers (1) 3-prong electrical outlet and comes with a universal adapter that fits all major cell phones and tablets. Furniture backs and swing table tops offer a great branding opportunity for your organization or your sponsors.



	Multi*	Single
Without Graphics	<b>\$3,060+</b>	<b>\$2,040+</b>

+ Indicates sales tax (currently 6.5%). Taxes are subject to change without notice.

\* Multi-day rate = rental period of up to 7 days

Requires 20 amps of power

Charging tables include charging ability with a multi-adapter

Other colors of seating available for an additional charge

Greens package pictured not included; see your Disney Representative for details

**PRICING IS VALID THROUGH SEPTEMBER 30, 2017**

**FOR MORE INFORMATION, CONTACT YOUR DISNEY REPRESENTATIVE.**

## CHARGING FURNITURE

## TWELVE-SECTION FULL MOON CHARGING STATION (RENTAL)

*In White, Black, Espresso Brown or Red with Swing Tables and Battery-Operated Water Wall*

	Multi*	Single
Without Graphics	<b>\$3,560+</b>	<b>\$2,540+</b>
2-sided branding upgrade on the water wall; up to 32"w x36"h graphic	<b>\$3,810+</b>	<b>\$3,120+</b>



+ Indicates sales tax (currently 6.5%). Taxes are subject to change without notice.

\* Multi-day rate = rental period of up to 7 days

Requires (2) 20 amps of power (one for configuration; one for wall)

Charging tables include charging ability with a multi-adapter

Other colors of seating available for an additional charge

**PRICING IS VALID THROUGH SEPTEMBER 30, 2017**

**FOR MORE INFORMATION, CONTACT YOUR DISNEY REPRESENTATIVE.**



## CHARGING STATIONS

Today's attendees rely on mobile technology more than ever, and having a charged device is a constant concern. To charge their phone, attendees simply open a locker, connect their device and lock it. We offer three sizes of charging stations operating on standard 110-volt power outlets. Charging stations not only provide attendees with the peace of mind to focus on your event, they allow you to offer sponsorship opportunities to generate additional revenue.

### POWERSTATION MINIS

Rental **\$1,200**

- Table top design with lockable bays (with key pad) or open bays
- Branding capabilities
- Features 16.5" x 9.5" window for branded graphic insert
- Ability to charge up to 8 phones
- 2 Apple® 30-pin/2 Apple® Lightning/4 Micro USB



### POWERSTATION

Rental **\$1,800**

- 4 lockable bays (with key pads) and smart locking system
- Branding capabilities
- Ability to charge up to 4 phones
- 4 Apple® 30-pin/4 Apple® Lightning/4 Micro USB



### POWERSTATION PRO

Rental **\$2,400**

- 20" programmable LCD display
- Branding capabilities
- Includes a BrightSign HD 120 media server
- 6 lockable bays with key pads and smart locking system
- Ability to charge up to 4 phones
- 6 Apple® 30-pin/6 Apple® Lightning/6 Micro USB

+ Indicates sales tax (currently 6.5%). Taxes are subject to change without notice.



**PRICING IS VALID THROUGH SEPTEMBER 30, 2017**

**FOR MORE INFORMATION, CONTACT YOUR DISNEY REPRESENTATIVE.**

## ENGAGEMENT TOOLS

### CATCHBOX

Catchbox is the world's first soft wireless microphone that you can throw into an audience to kick-start a discussion. Catchbox improves lectures, conferences, and group work by encouraging audiences to share ideas and discuss challenges.

- Customization — with your logo, company color or design of your choosing
- Lightweight design — to be easily tossed from one person to the next
- Affordability — more cost effective than multiple microphones
- Ease-of-use — no more having runners speeding around the room to pass a microphone
- Fun — standing in line behind a microphone is a thing of the past

**\$410** per day

**\$800** per event



**PRICING IS VALID THROUGH SEPTEMBER 30, 2017**

**FOR MORE INFORMATION, CONTACT YOUR DISNEY REPRESENTATIVE.**

## ENGAGEMENT TOOLS

### SOCIAL MEDIA WALL



- Pulls in posts and photos from Twitter and Instagram
- Choose from seven full-screen display animations
- Customize your display color, theme, and background
- Apply filters to moderate content or select each post with the Curated Gallery
- Use our widget to embed SocialWall on your website
- Build Pre-Event Buzz
- Inspire On-Site Event Engagement
- Extend Post-Event Excitement

**\$3,200** per event (includes 46" monitor on stand for display. Additional equipment available for an additional charge).

**PRICING IS VALID THROUGH SEPTEMBER 30, 2017**

**FOR MORE INFORMATION, CONTACT YOUR DISNEY REPRESENTATIVE.**

## ENGAGEMENT TOOLS

### DISNEY INTERACTIVE ACTORS

Whether you are looking for comedic actors to populate your themed environment, or a customized character who can be scripted into your event, we are experts in choosing just the right interactive actors to engage your audience and deliver your organization's key messages.



SCAN OR CLICK



### ATMOSPHERE ACTORS

Atmosphere Actors are Disney's interactive, improvisational entertainers who mix and mingle with your Guests. Personalized to your organization and theme, they are some of the most memorable characters you'll ever meet. From their names and costumes, to their props and interactions, they use your industry lingo to reinforce your messages in ways that won't soon be forgotten. Every interaction with them is a mini show guaranteed to bring humor, entertainment, and excitement to your Guests. You never know who you'll run into or just how hard you will laugh!

### FEATURED ACTORS

Featured Actors are Disney's own interactive, improvisational entertainers who are customized to your organization and event theme and can be theatrically scripted in a variety of settings. Whether hosting your awards program, facilitating your general session, offering entertaining energizers in your breakouts, or mingling with your party crowd, they are some of the most memorable characters you'll ever meet. From their customized names, costumes, and props, to their hilarious delivery of "inside information," they highlight your key messages in ways that won't soon be forgotten. Every interaction with them is a mini show guaranteed to bring humor, entertainment, and excitement to your Guests.

Pricing starting at **\$1,200**

*Talent is scheduled based on availability and is subject to change without notice.*

**PRICING IS VALID THROUGH SEPTEMBER 30, 2017**

**FOR MORE INFORMATION, CONTACT YOUR DISNEY REPRESENTATIVE.**



## ENGAGEMENT TOOLS

### GRAPHIC RECORDING

Experts estimate that 65 percent of the population are visual learners, responding best to pictures, graphics, maps, and written information. Graphic recording capitalizes on this ability through live visual capture of event keynotes, panels, and training content in engaging, colorful murals or storyboard form, literally drawing on themes and abstract concepts to bring them to life on 60" x 40" boards.

A skilled graphic recorder can capture visuals that cross over the boundaries of culture and language to provide a lasting visual record of your meeting content.

#### Package includes:

- Pre-event consultation to clarify goals and objectives, and to pre-sketch key themes and content points
- Live visual capture of meeting content (up to three [3] sessions per day)
- Follow-up with capture of final images. If needed, we can prepare and ship the completed boards back to your office.



- 2 days (one graphic recorder) - **\$8,000**
- 3 days (one graphic recorder) - **\$11,000**

**PRICING IS VALID THROUGH SEPTEMBER 30, 2017**

**FOR MORE INFORMATION, CONTACT YOUR DISNEY REPRESENTATIVE.**

# SIGNAGE

## PORTABLE SIGNAGE

### EASEL SIGNS

Easel Signs can be purchased individually or included in a larger sponsorship package. They are 24" wide x 36" high and printed on 3/16" gator board, single-sided.

**\$155 each** – Qty. 1-9 (includes design, printing, and use of resort easel stand)

**\$1,395** – Bundle of 10



### RETRACTABLE BANNERS

Our retractable floor-standing banners are approximately 33" wide x 78" high and very portable, allowing them to be relocated and repurposed during your event. Use them to display the agenda or other event content, or to exclusively promote your sponsors. These single-sided banners may be purchased individually or included in a larger sponsorship package.

**\$360 Economy** – Qty. 1-9 Cost-savings option for single-event usage.

Lightweight frame; banner changes not recommended (includes design, printing, and carrying case)

**\$565 Premium** – Qty. 1-9 Our Premium retractable banner stands are a quality above our economy retractable banners. The Premium banner stands have more durable hardware and are better suited for replacing the graphic. (includes design, printing, and carrying case)

**\$3,240 Economy Bundle** – Bundle of 10 (includes design, printing, and carrying case)

**\$5,085 Premium Bundle** – Bundle of 10 (includes design, printing, and carrying case)

**PRICING IS VALID THROUGH SEPTEMBER 30, 2017**

**FOR MORE INFORMATION, CONTACT YOUR DISNEY REPRESENTATIVE.**

## PORTABLE SIGNAGE



## SLIP-COVER BANNER STANDS

These fashionable floor-standing banners have a very clean and sophisticated look, and their curved tops add extra focus. Plus, they're the easiest graphic change banner stand system ever – simply slip the two-sided fabric graphic over the frame! Frames are available for rent or purchase.

**\$650 each** – 24" x 84" Rental (\$820 for purchase, includes stand and carry bag)

**\$695 each** – 30" x 84" Rental (\$860 for purchase, includes stand and carry bag)

**\$720 each** – 36" x 84" Rental (\$885 for purchase, includes stand and carry bag)

**PRICING IS VALID THROUGH SEPTEMBER 30, 2017**

**FOR MORE INFORMATION, CONTACT YOUR DISNEY REPRESENTATIVE.**

## PORTABLE SIGNAGE

### FLOOR GRAPHICS

Floor graphics can be used as directional signage, for event branding, or to acknowledge award winners during a gala celebration. They are available in 24," 36," or 48" square or circular sizes and may be applied to carpeted or hard surfaces, and they may be purchased individually or bundled as part of a sponsor signage package. Price includes installation and removal.

**\$175 each** – 24" graphic, Qty. 1-9 (\$1,575 – Bundle of 10)

**\$250 each** – 36" graphic, Qty. 1-9 (\$2,250 – Bundle of 10)

**\$350 each** – 48" graphic, Qty. 1-9 (\$3,150 – Bundle of 10)



PRICING IS VALID THROUGH SEPTEMBER 30, 2017

FOR MORE INFORMATION, CONTACT YOUR DISNEY REPRESENTATIVE.



# SIGNAGE

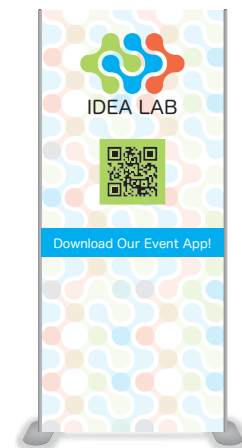
## PORTABLE SIGNAGE

### METER BOARD (METAL BASE)

Our Monolith (meter board) sign is easily seen within your large meeting space. They are 48' wide x 96" high and are perfect for displaying your event agenda or promoting sponsors in foyer areas.

**\$525 each** – Single-sided (*includes design, printing, and metal frame rental*)

**\$675 each** – Double-sided (*includes design, printing, and metal frame rental*)



### METER BOARD (CARDBOARD BASE)

Our Monolith (meter board) sign is easily seen within your large meeting space. Our cardboard base signs are 38" wide x 84" high and are perfect for displaying your event agenda or promoting sponsors in foyer areas.

**\$385 each** – Single-sided (*includes design, printing, and cardboard base*)

**\$495 each** – Double-sided (*includes design, printing, and cardboard base*)



### TRIANGULAR METER BOARD

Our 3-sided meter boards are great for wide open spaces or at intersecting hallways. They measure 36" x 84" x .5"

**\$850 each** (*includes design, printing and frame rental*)



**PRICING IS VALID THROUGH SEPTEMBER 30, 2017**

**FOR MORE INFORMATION, CONTACT YOUR DISNEY REPRESENTATIVE.**

# SIGNAGE

## PORTABLE SIGNAGE

### STACKED CUBES

Our cube stacks provide a very versatile signage option for promoting sponsors, reinforcing your brand, or delivering event information. For example, stack two or three cubes with their sides flush to create a dramatic column of information. Or, rotate them off axis from one another to create additional visual interest. As another option, use two stacks of three cubes to create a bold entrance to your general session. Then, change out some of the sides of the cubes and create three stacks of two cubes to designate breakout room or special event areas at different times during your event. The sides of the cubes are attached to a lightweight metal frame using magnetic strips; repositioning the cubes and changing side panels is very easy.

**\$1,180** – Set of (3) 2' Cubes (*includes four panels; \$160 each for additional panels*)

**\$800 each** – 3' Cube (*includes four panels; \$255 each for additional panels*)

**\$990 each** – 4' Cube (*includes four panels; \$300 each for additional panels*)

*Pricing includes design, printing, and frame rental*



3' Cube shown

### GIANT CUBE

Our Giant Cubes are large enough to help brand your event with a strong image while delivering lots of event information such as your full agenda. The cubes are made of a lightweight aluminum frame with flame retardant stretch fabric outer skin that supports high-resolution printing. The cubes come in three sizes.

**\$3,200 each**, 8' x 8' x 8' (*includes design, printing and frame rental*)

**\$3,900 each**, 8' x 8' x 10' (*includes design, printing and frame rental*)

**\$4,600 each**, 8' x 8' x 12' (*includes design, printing and frame rental*)



8' x 8' x 10' Cube shown

**PRICING IS VALID THROUGH SEPTEMBER 30, 2017**

**FOR MORE INFORMATION, CONTACT YOUR DISNEY REPRESENTATIVE.**

## PORTABLE SIGNAGE

### GRAPHIC WALLS

Our large Graphic Walls provide a great way to brand medium to large spaces, such as in foyers and at the end of hallways. They are printed on high-resolution, non-glare fabric, and are virtually wrinkle-free. Price includes frame rental, setup, and breakdown. Optional LED lighting is available for an additional fee.

#### 8' TALL SCISSOR-FRAME WALL

**\$1,475** – 8' x 8' fabric wall

**\$2,300** – 12.5' x 8' fabric wall

**\$2,945** – 16' x 8' fabric wall

*Optional LED Light Bars Available @ \$150 each  
(requires location near a power outlet)*



12.5' x 8' Graphic wall shown

#### 8' TALL BACKLIT GRAPHIC WALL

Add a touch of brilliance to your event environment - the modern version of the old light-box technology. This graphic wall comes in two sizes. The frame structure contains ultra-bright LED fixtures that produce a fantastic-looking, bright image that will capture everyone's attention, regardless of ambient lighting conditions.

Pricing includes design, printing, frame rental, setup, and removal.

*For indoor use only.*

10' x 8' Display: **\$3,400 each**



16' x 8' Display: **\$4,500 each**



**PRICING IS VALID THROUGH SEPTEMBER 30, 2017**

**FOR MORE INFORMATION, CONTACT YOUR DISNEY REPRESENTATIVE.**

# SIGNAGE

## PORTABLE SIGNAGE

### GRAPHIC WALLS

#### 10' TALL SCISSOR-FRAME WALL

**\$2,875** – 12.5' x 10' fabric wall

**\$5,750** – 25' x 10' fabric wall

Price includes fabrication, frame rental, setup, and breakdown.

*Optional LED Light Bars Available @ \$150 each*

*(requires location near a power outlet)*



25' x 10' Graphic wall shown

### OUTDOOR GRAPHIC WALL

This vinyl graphic wall is designed for outdoor use. It utilizes a 60" rear-extended jack stand to accommodate ballast to secure it. Price includes fabrication, frame rental, setup including ballast, and breakdown.

**\$5,000** – 12' x 8' outdoor wall



### OUTDOOR QUAD TOWER

This non-illuminated outdoor sign provides (4) weather-resistant Coroplast® surfaces to provide visibility from all sides. It measures 40" wide by 40" deep by 96" tall and is weighted from inside. Price includes fabrication, frame rental, setup including ballast, and breakdown.

**\$1,770 each**



**PRICING IS VALID THROUGH SEPTEMBER 30, 2017**

**FOR MORE INFORMATION, CONTACT YOUR DISNEY REPRESENTATIVE.**





# RESORT-SPECIFIC SIGNAGE

## — DISNEY'S CONTEMPORARY RESORT —

On the following pages, you may browse several popular areas for branding and signage throughout the resort meeting space.

Catalog pricing includes project management, design, installation, and removal of individual sign elements. Purchase of multiple items may drive efficiencies that can result in cost savings.

Please note that availability of locations depicted within is not guaranteed due to possible shared use of the meeting space by other groups.

In the examples, the blue color indicates adhesive graphics, and the green color indicates hanging banners. For safety purposes, hanging banners must be installed by Disney.

Please check with your Disney Representative for availability and any additional questions.

**FOR MORE INFORMATION, CONTACT YOUR DISNEY REPRESENTATIVE.**

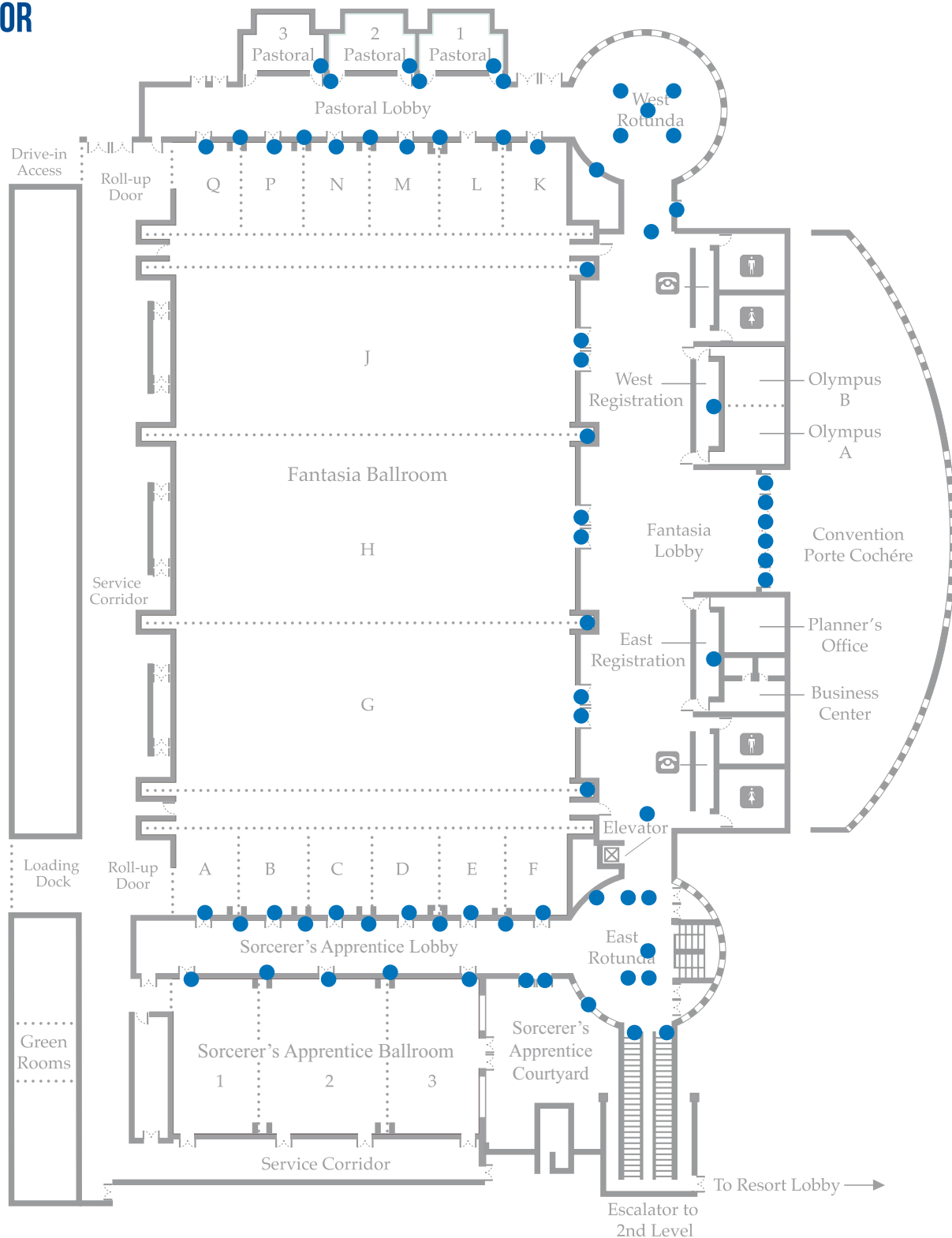
©Disney



# SIGNAGE OPPORTUNITIES FOR DISNEY'S CONTEMPORARY RESORT

Click on the blue dots below to view suggested signage/branding opportunities for the areas on the map.

## FIRST FLOOR



FOR MORE INFORMATION, CONTACT YOUR DISNEY REPRESENTATIVE.

# SIGNAGE OPPORTUNITIES FOR DISNEY'S CONTEMPORARY RESORT

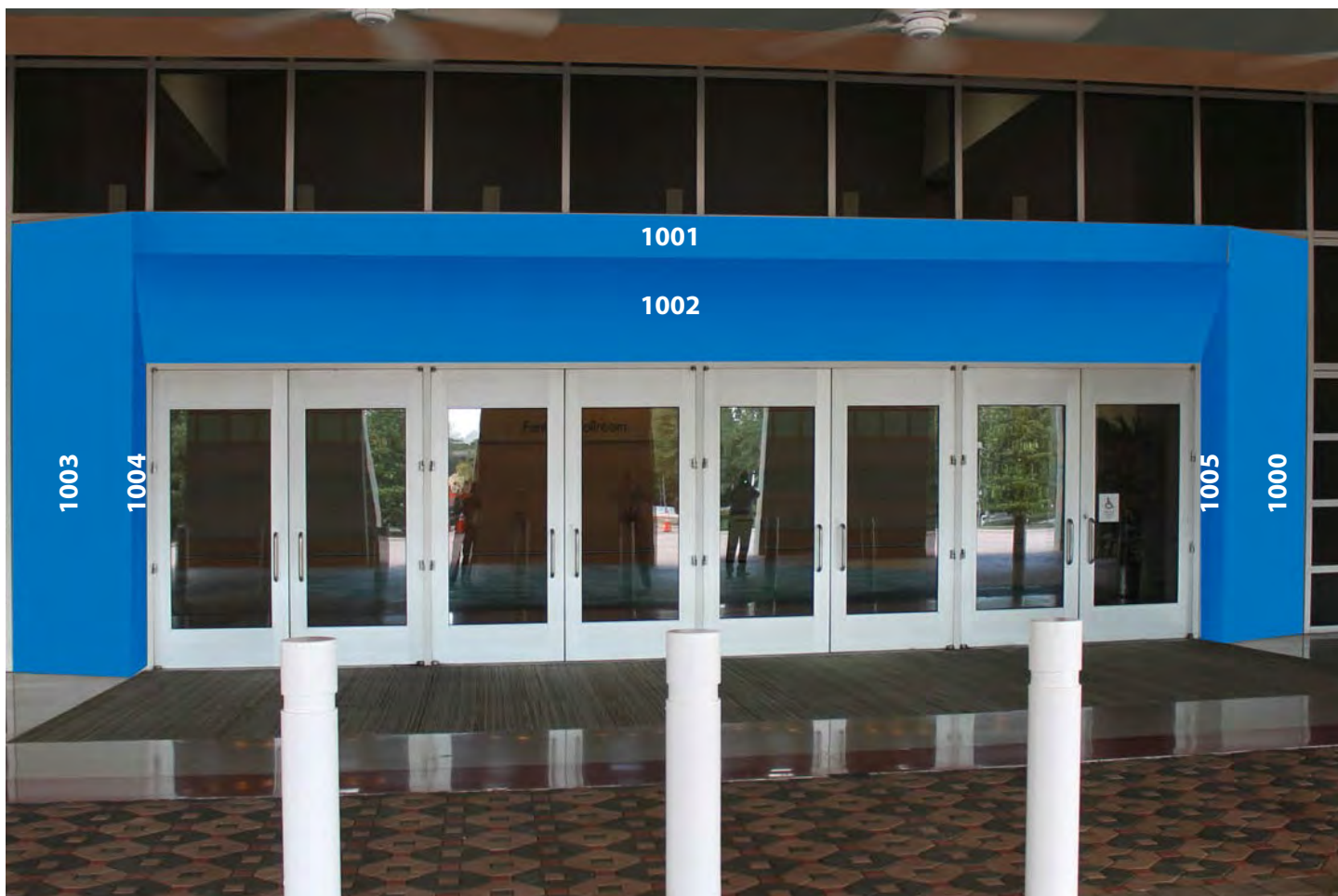
Click on the blue dots below to view suggested signage/branding opportunities for the areas on the map.

## SECOND FLOOR



FOR MORE INFORMATION, CONTACT YOUR DISNEY REPRESENTATIVE.

## SIGNAGE OPPORTUNITIES FOR DISNEY'S CONTEMPORARY RESORT



### PORTE-COCHERE ENTRANCE

1000 - Right Side Vertical Column	\$1,065
1001 - Entrance Top Valance Strip	\$785
1002 - Entrance Bottom Valance Strip	\$2,165
1003 - Left Side Vertical Column	\$1,070
1004 - Left Column Inset Panel	\$485
1005 - Right Column Inset Panel	\$480

*Note: Availability of locations depicted is not guaranteed due to possible shared use of the meeting space by other groups. Please check with your Disney Representative for availability.*

[◀ BACK TO MAP](#)

**PRICING IS VALID THROUGH SEPTEMBER 30, 2017**

**FOR MORE INFORMATION, CONTACT YOUR DISNEY REPRESENTATIVE.**

## SIGNAGE OPPORTUNITIES FOR DISNEY'S CONTEMPORARY RESORT



### FANTASIA BALLROOM FOYER

1101-1103 - Ballroom Door Headers (3 available Fantasia Ballroom entrances), each	\$815
1105 - Vertical Support Column-Side Panel (1107 is not shown on opposite side), each	\$1,395
1106 - Vertical Support Column-Front Panel	\$850
1108 - Vertical Support Column-Side Panel (1110 is not shown on opposite side), each	\$1,395
1109 - Vertical Support Column-Front Panel	\$850
1111 - Balcony Front	\$1,300
1112 - Balcony Back Wall	\$3,475

*Note: Availability of locations depicted is not guaranteed due to possible shared use of the meeting space by other groups. Please check with your Disney Representative for availability.*

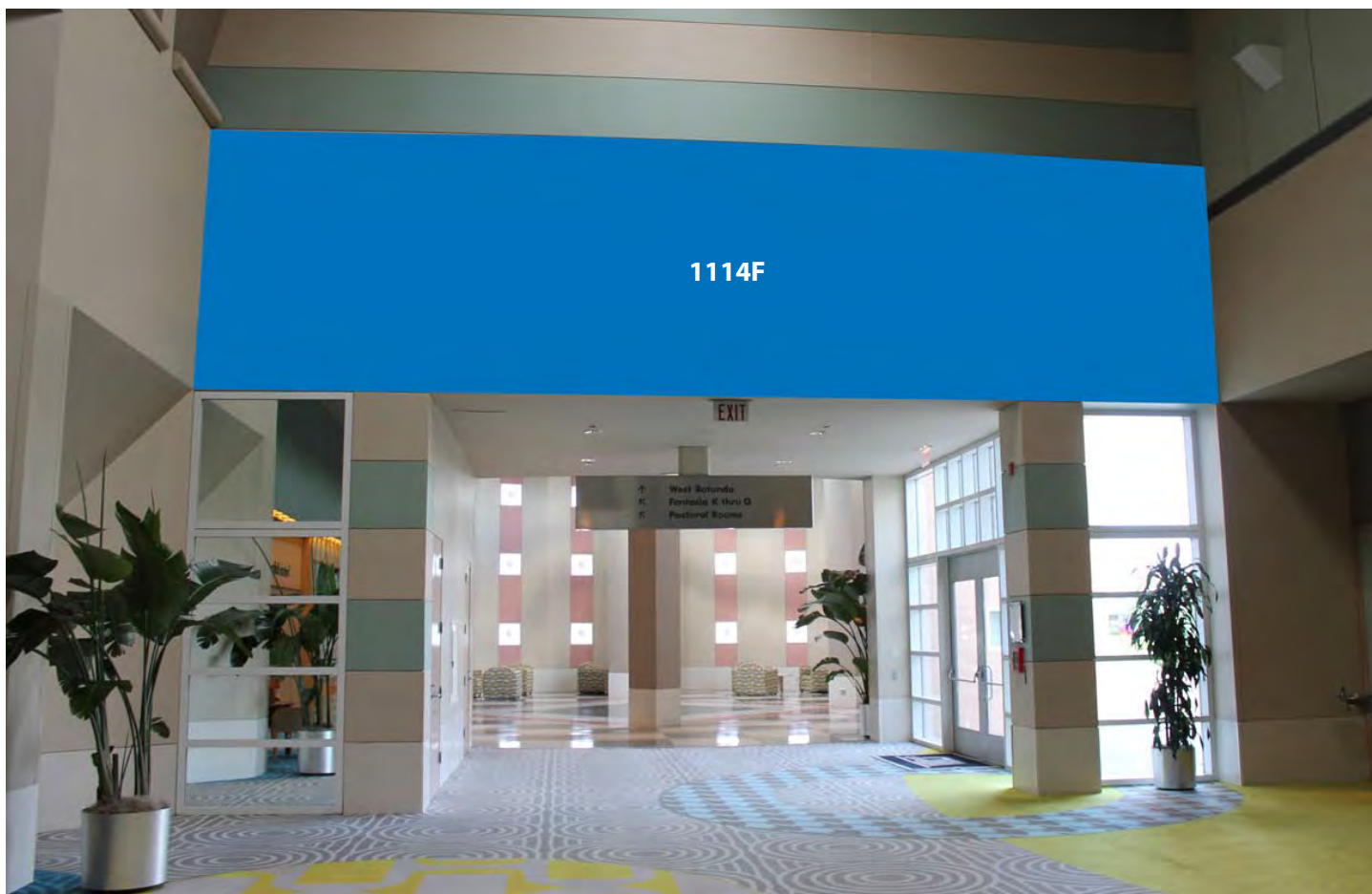
[◀ BACK TO MAP](#)

**PRICING IS VALID THROUGH SEPTEMBER 30, 2017**

**FOR MORE INFORMATION, CONTACT YOUR DISNEY REPRESENTATIVE.**



# SIGNAGE OPPORTUNITIES FOR DISNEY'S CONTEMPORARY RESORT



## ENTRY TO WEST ROTUNDA

1114 - Entry to West Rotunda Graphic, full coverage

\$5,100

*Note: Availability of locations depicted is not guaranteed due to possible shared use of the meeting space by other groups. Please check with your Disney Representative for availability.*

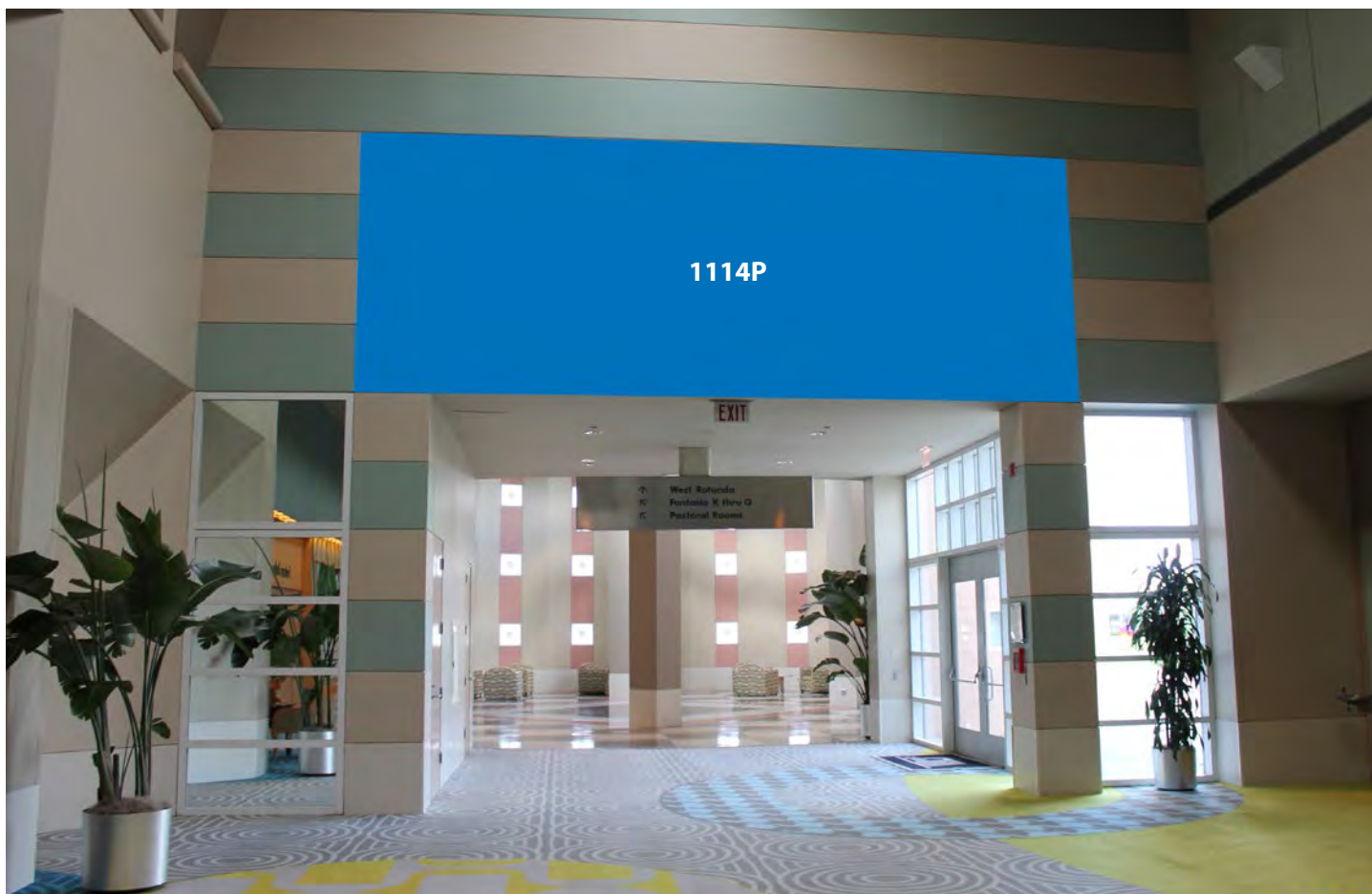
[◀ BACK TO MAP](#)

**PRICING IS VALID THROUGH SEPTEMBER 30, 2017**

**FOR MORE INFORMATION, CONTACT YOUR DISNEY REPRESENTATIVE.**



# SIGNAGE OPPORTUNITIES FOR DISNEY'S CONTEMPORARY RESORT



## ENTRY TO WEST ROTUNDA

1114 - Entry to West Rotunda Graphic, partial coverage

\$4,200

*Note: Availability of locations depicted is not guaranteed due to possible shared use of the meeting space by other groups. Please check with your Disney Representative for availability.*

[◀ BACK TO MAP](#)

**PRICING IS VALID THROUGH SEPTEMBER 30, 2017**

**FOR MORE INFORMATION, CONTACT YOUR DISNEY REPRESENTATIVE.**

# SIGNAGE OPPORTUNITIES FOR DISNEY'S CONTEMPORARY RESORT



## WEST/EAST REGISTRATION DESK HANGING BANNER\*

1115 - West Registration Back Wall Hanging Banner	\$3,575
1116 - West Registration Front of Desk Vinyl	\$1,400
<i>For East Registration Desk (not shown):</i>	
1117- East Registration Back Wall Hanging Banner	\$3,545
1118 - East Registration Front of Desk Vinyl	\$1,400

\* For safety purposes, hanging banners must be installed by Disney.

Note: Availability of locations depicted is not guaranteed due to possible shared use of the meeting space by other groups. Please check with your Disney Representative for availability.

[◀ BACK TO MAP](#)

PRICING IS VALID THROUGH SEPTEMBER 30, 2017

FOR MORE INFORMATION, CONTACT YOUR DISNEY REPRESENTATIVE.

# SIGNAGE OPPORTUNITIES FOR DISNEY'S CONTEMPORARY RESORT



## WEST ROTUNDA

1300 - Large Floor Graphic (app. 9' diameter, seamed)

\$1,945

*Note: Availability of locations depicted is not guaranteed due to possible shared use of the meeting space by other groups. Please check with your Disney Representative for availability.*

[◀ BACK TO MAP](#)

**PRICING IS VALID THROUGH SEPTEMBER 30, 2017**

**FOR MORE INFORMATION, CONTACT YOUR DISNEY REPRESENTATIVE.**



## SIGNAGE OPPORTUNITIES FOR DISNEY'S CONTEMPORARY RESORT



### VERTICAL COLUMNS FULL-HEIGHT SURROUND

1301F through 1304F – Vertical Column Full-height Surround, each column

\$1,800

*Note: Availability of locations depicted is not guaranteed due to possible shared use of the meeting space by other groups. Please check with your Disney Representative for availability.*

[◀ BACK TO MAP](#)

**PRICING IS VALID THROUGH SEPTEMBER 30, 2017**

**FOR MORE INFORMATION, CONTACT YOUR DISNEY REPRESENTATIVE.**

## SIGNAGE OPPORTUNITIES FOR DISNEY'S CONTEMPORARY RESORT



### VERTICAL COLUMNS HALF-HEIGHT SURROUND

1301H through 1304H - Vertical Column Half-height Surround, each column

\$1,000

*Note: Availability of locations depicted is not guaranteed due to possible shared use of the meeting space by other groups. Please check with your Disney Representative for availability.*

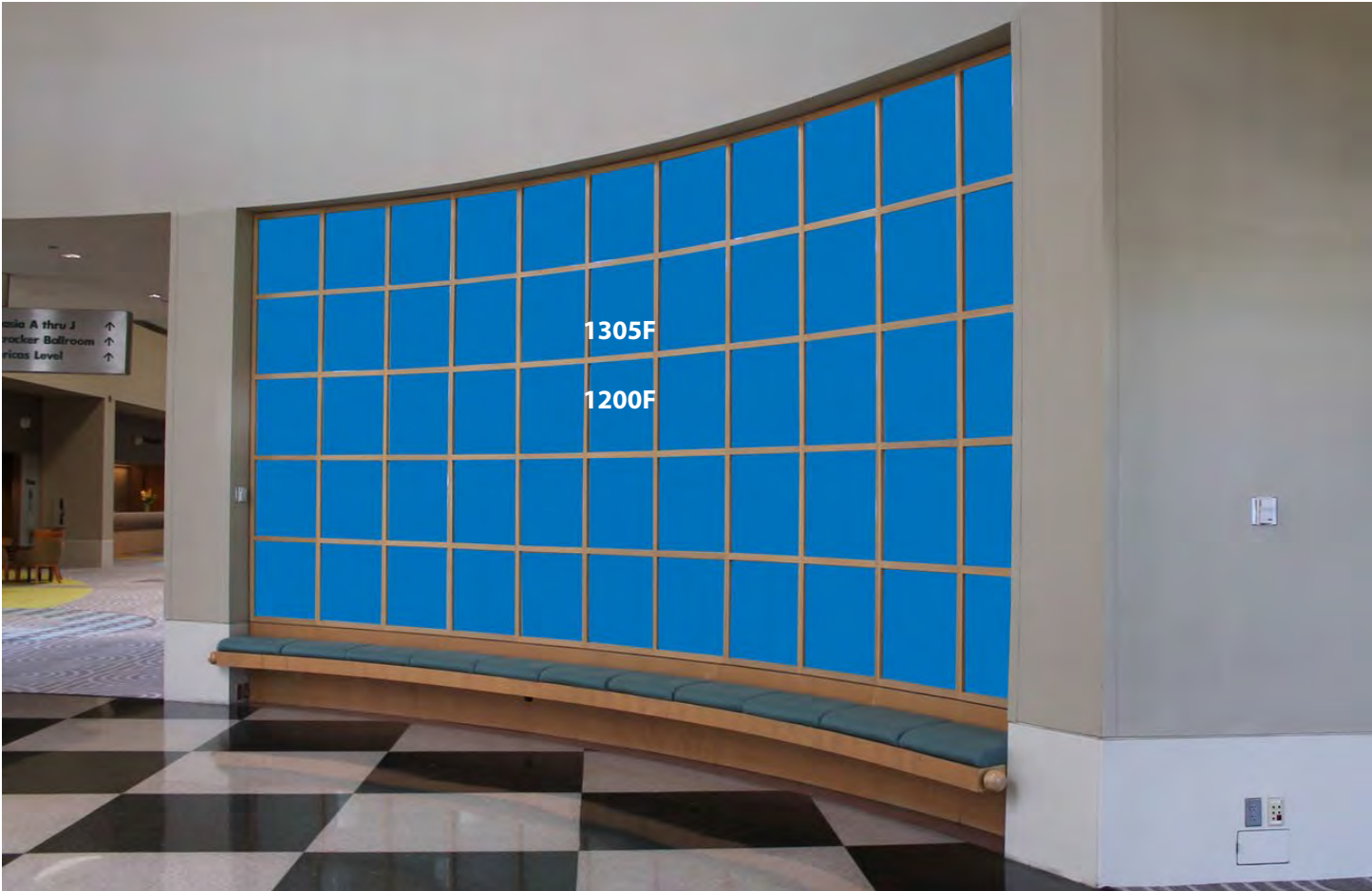
[◀ BACK TO MAP](#)

**PRICING IS VALID THROUGH SEPTEMBER 30, 2017**

**FOR MORE INFORMATION, CONTACT YOUR DISNEY REPRESENTATIVE.**



# SIGNAGE OPPORTUNITIES FOR DISNEY'S CONTEMPORARY RESORT



## ROTUNDA WALLS

1305F - West Rotunda Wall Graphic (pictured) – Full-wall, 55 Tiles	\$5,000
1200F - East Rotunda Wall Graphic – Full-wall, 55 Tiles	\$5,000

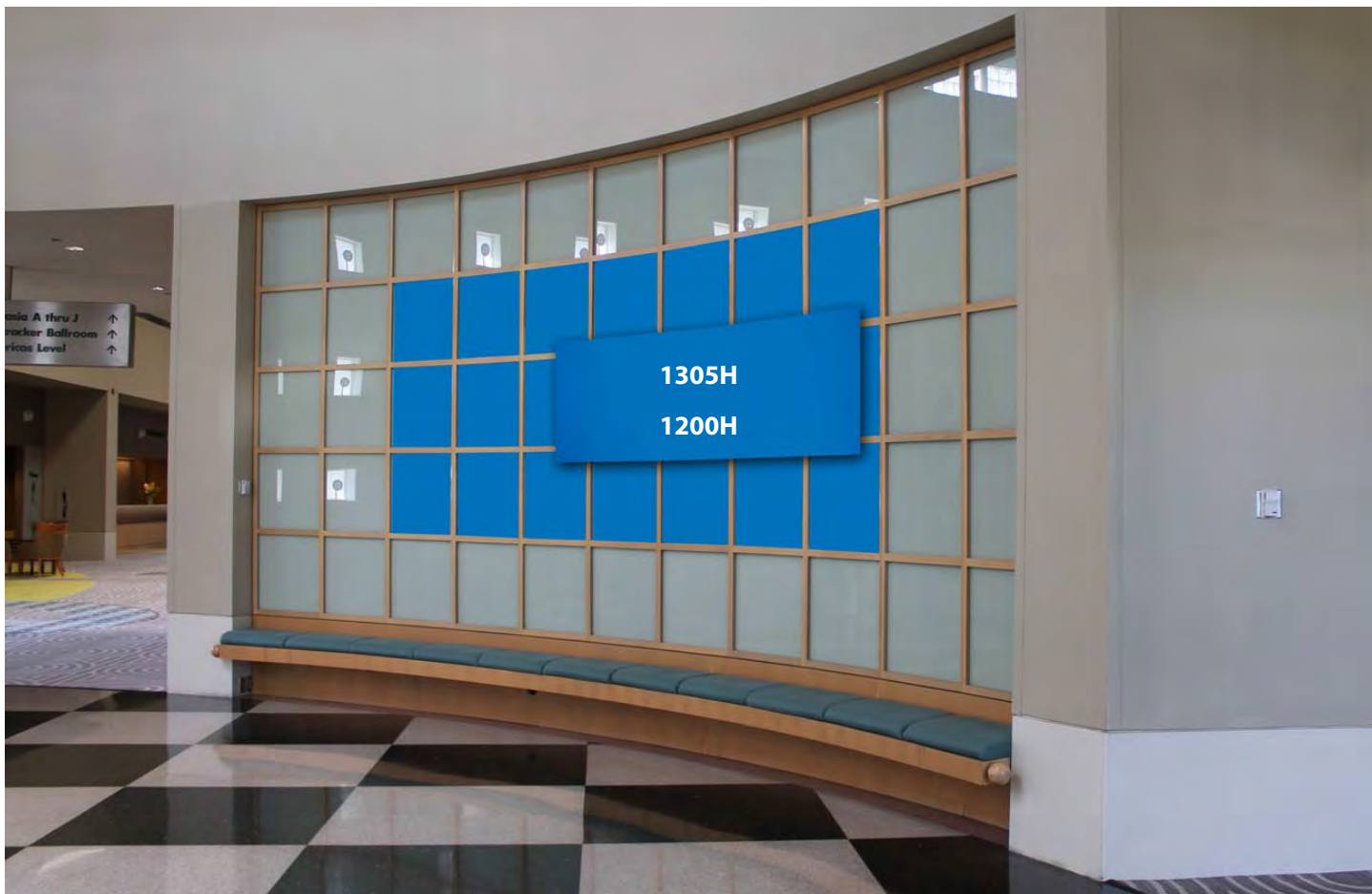
*Note: Availability of locations depicted is not guaranteed due to possible shared use of the meeting space by other groups. Please check with your Disney Representative for availability.*

[◀ BACK TO MAP](#)

**PRICING IS VALID THROUGH SEPTEMBER 30, 2017**

**FOR MORE INFORMATION, CONTACT YOUR DISNEY REPRESENTATIVE.**

# SIGNAGE OPPORTUNITIES FOR DISNEY'S CONTEMPORARY RESORT



## ROTUNDA WALLS

1305H - West Rotunda Wall Graphic (pictured) – Half-wall, 21 Tiles with Stand-off Graphic (8'x3')	\$3,950
1200H - East Rotunda Wall Graphic – Half-wall, 21 Tiles with Stand-off Graphic (8'x3')	\$3,950

*Note: Availability of locations depicted is not guaranteed due to possible shared use of the meeting space by other groups. Please check with your Disney Representative for availability.*

[◀ BACK TO MAP](#)

**PRICING IS VALID THROUGH SEPTEMBER 30, 2017**

**FOR MORE INFORMATION, CONTACT YOUR DISNEY REPRESENTATIVE.**

# SIGNAGE OPPORTUNITIES FOR DISNEY'S CONTEMPORARY RESORT



## WEST ROTUNDA EXIT

1306 P - West Rotunda Exit Doors, each door, partial cover as pictured*	\$200
1307 - West Rotunda Exit Side Light Windows, each panel	\$280

\* Other options available. For safety purposes, full coverage of doors requires use of window perf material applied to exterior surface; this is visible from outside only. Pricing for other solutions available upon request.

Additional doors and windows around the resort are available for branding at the same price.

Note: Availability of locations depicted is not guaranteed due to possible shared use of the meeting space by other groups. Please check with your Disney Representative for availability.

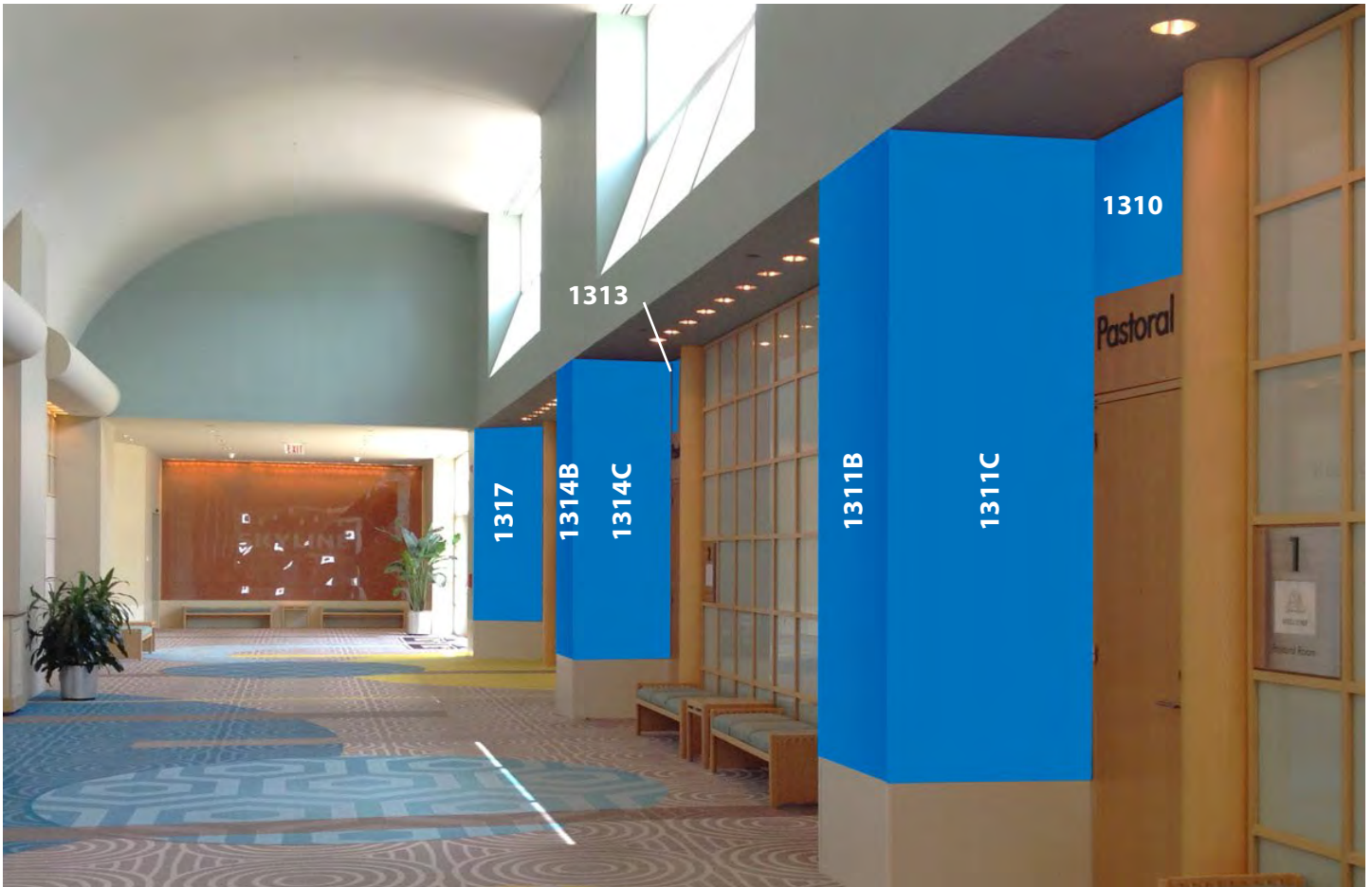
[◀ BACK TO MAP](#)

PRICING IS VALID THROUGH SEPTEMBER 30, 2017

FOR MORE INFORMATION, CONTACT YOUR DISNEY REPRESENTATIVE.



## SIGNAGE OPPORTUNITIES FOR DISNEY'S CONTEMPORARY RESORT



### PASTORAL HALLWAY

1310 - Door Header Graphic	\$295
1311A/C - Column Graphics - Sides, each	\$1,440
1311 B - Column Graphic - Front Face	\$1,440
1313- Door Header Graphic	\$295
1314 A/C - Column Graphics - Sides, each	\$1,440
1314 B - Column Graphic - Front Face	\$1,440
1317 - Column End cap	\$900

*Note: Doors open outward and will obstruct view of column sides while open.*

*Note: Availability of locations depicted is not guaranteed due to possible shared use of the meeting space by other groups. Please check with your Disney Representative for availability.*

[◀ BACK TO MAP](#)

**PRICING IS VALID THROUGH SEPTEMBER 30, 2017**

**FOR MORE INFORMATION, CONTACT YOUR DISNEY REPRESENTATIVE.**

# SIGNAGE OPPORTUNITIES FOR DISNEY'S CONTEMPORARY RESORT



## EAST ROTUNDA ATRIUM ACCESS

1201M - 20" Medallion Graphics, each door, as shown	\$225
1202 - East Rotunda Atrium Access-Side Light Window Panels, each panel	\$280

\* For safety purposes, full coverage of doors requires use of window perf material applied to exterior surface; this is visible from outside only. Option shown utilizes semi-opaque white vinyl. Pricing for other solutions available upon request.

Additional doors and windows around the resort are available at the same price.

Note: Availability of locations depicted is not guaranteed due to possible shared use of the meeting space by other groups. Please check with your Disney Representative for availability.

[◀ BACK TO MAP](#)

**PRICING IS VALID THROUGH SEPTEMBER 30, 2017**

**FOR MORE INFORMATION, CONTACT YOUR DISNEY REPRESENTATIVE.**



## SIGNAGE OPPORTUNITIES FOR DISNEY'S CONTEMPORARY RESORT



### EAST ROTUNDA ATRIUM FULL GLASS WALL

1203F - East Rotunda Atrium Full Glass Wall

\$6,150

*Note: Availability of locations depicted is not guaranteed due to possible shared use of the meeting space by other groups. Please check with your Disney Representative for availability.*

[◀ BACK TO MAP](#)

**PRICING IS VALID THROUGH SEPTEMBER 30, 2017**

**FOR MORE INFORMATION, CONTACT YOUR DISNEY REPRESENTATIVE.**

## SIGNAGE OPPORTUNITIES FOR DISNEY'S CONTEMPORARY RESORT



### EAST ROTUNDA ATRIUM GLASS WALL STRIP

1203P - East Rotunda Atrium Glass Wall Strip (6 narrow windows in a row)

\$1,025

*Note: Availability of locations depicted is not guaranteed due to possible shared use of the meeting space by other groups. Please check with your Disney Representative for availability.*

[◀ BACK TO MAP](#)

**PRICING IS VALID THROUGH SEPTEMBER 30, 2017**

**FOR MORE INFORMATION, CONTACT YOUR DISNEY REPRESENTATIVE.**

## SIGNAGE OPPORTUNITIES FOR DISNEY'S CONTEMPORARY RESORT



### SORCERER'S APPRENTICE LOBBY, FANTASIA SALONS

1213 A, C - Column Graphics - Side Panels, each	\$565
1213 B - Column Graphics - Front Panel	\$2,220
1214 A, C - Column Graphics - Side Panels, each	\$545
1214 B - Column Graphics - Front Panel	\$2,210
1230, 1231 - Door Header Graphics	\$580

*Other locations available in the Sorcerer's Apprentice and Pastoral Lobbies, not shown.*

*Note: Availability of locations depicted is not guaranteed due to possible shared use of the meeting space by other groups. Please check with your Disney Representative for availability.*

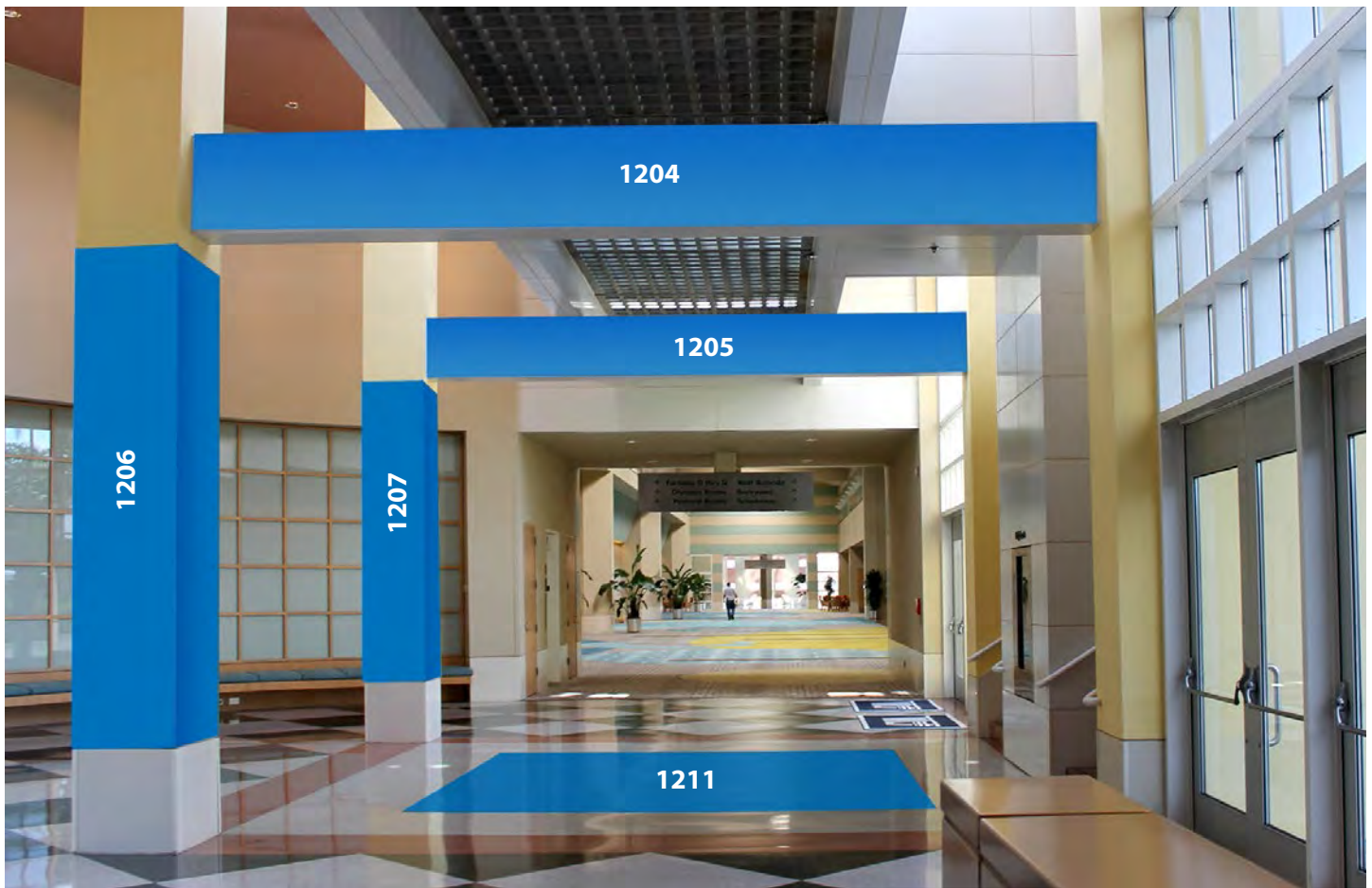
[◀ BACK TO MAP](#)

**PRICING IS VALID THROUGH SEPTEMBER 30, 2017**

**FOR MORE INFORMATION, CONTACT YOUR DISNEY REPRESENTATIVE.**



# SIGNAGE OPPORTUNITIES FOR DISNEY'S CONTEMPORARY RESORT



## EAST ROTUNDA HEADERS AND COLUMN WRAPS

Low-tack adhesive signage can be applied to the vertical columns or the horizontal beams.

1204 - East Rotunda Overhead Header (per side)	\$880
1205 - East Rotunda Overhead Header (per side)	\$880
1206 - East Rotunda Column Wrap	\$1,380
1207 - East Rotunda Column Wrap	\$1,380
1211 - Large Square Floor Graphic opposite stairs	\$3,800

*Note: Availability of locations depicted is not guaranteed due to possible shared use of the meeting space by other groups. Please check with your Disney Representative for availability.*

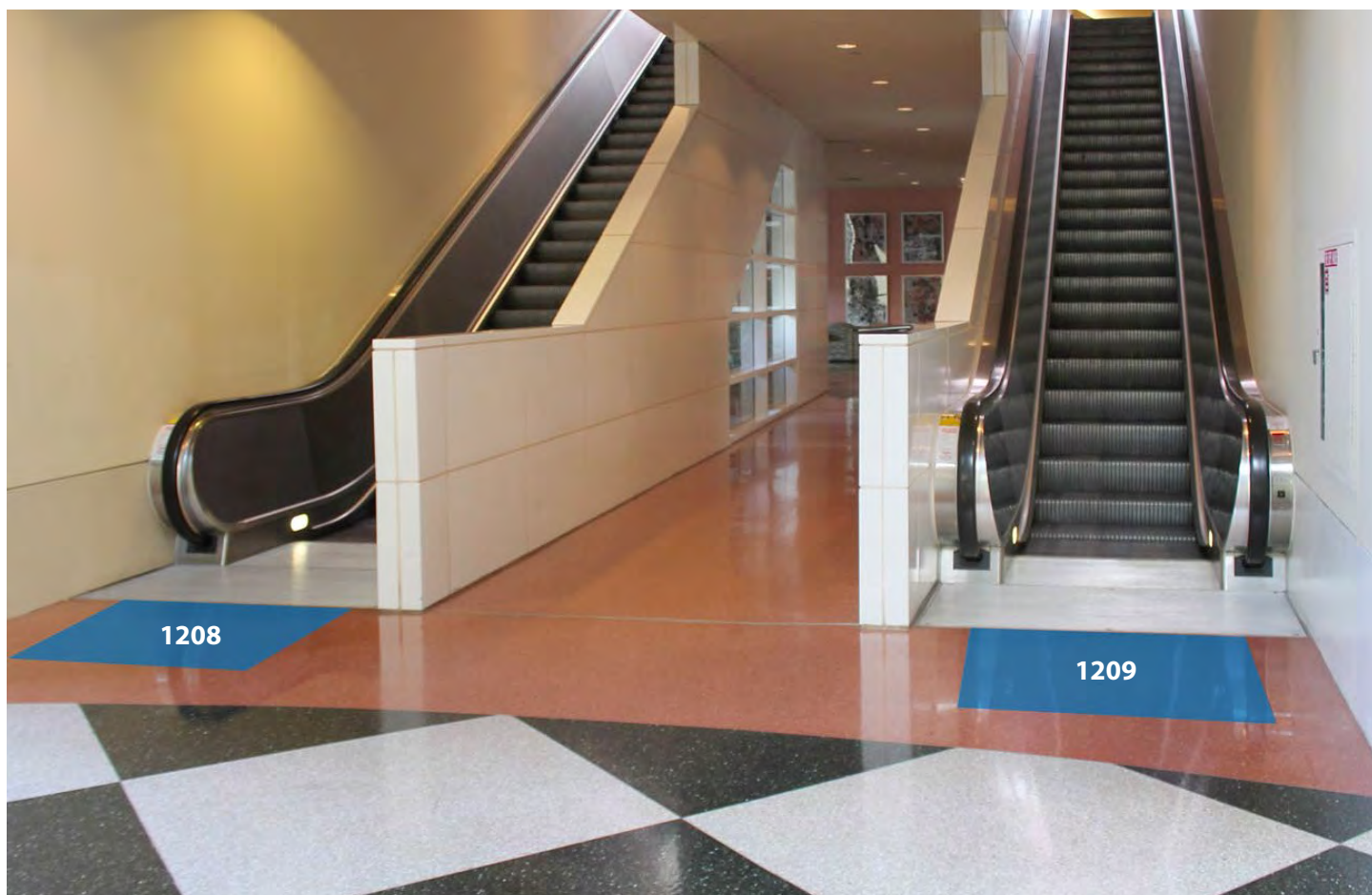
[◀ BACK TO MAP](#)

**PRICING IS VALID THROUGH SEPTEMBER 30, 2017**

**FOR MORE INFORMATION, CONTACT YOUR DISNEY REPRESENTATIVE.**



## SIGNAGE OPPORTUNITIES FOR DISNEY'S CONTEMPORARY RESORT



### EAST ROTUNDA ESCALATOR FLOOR GRAPHICS

1208 - Bottom Landing of Down Escalator	\$555
1209 - Bottom Landing of Up Escalator	\$555

*Note: Availability of locations depicted is not guaranteed due to possible shared use of the meeting space by other groups. Please check with your Disney Representative for availability.*

[◀ BACK TO MAP](#)

**PRICING IS VALID THROUGH SEPTEMBER 30, 2017**

**FOR MORE INFORMATION, CONTACT YOUR DISNEY REPRESENTATIVE.**

## SIGNAGE OPPORTUNITIES FOR DISNEY'S CONTEMPORARY RESORT



### SORCERER'S APPRENTICE BALLROOM 3 COLUMNS (SET OF 2)

1226,1227 - Tall Column faces framing doors to courtyard (set of 2)

\$2,790

*Note: Availability of locations depicted is not guaranteed due to possible shared use of the meeting space by other groups. Please check with your Disney Representative for availability.*

[◀ BACK TO MAP](#)

**PRICING IS VALID THROUGH SEPTEMBER 30, 2017**

**FOR MORE INFORMATION, CONTACT YOUR DISNEY REPRESENTATIVE.**

# SIGNAGE OPPORTUNITIES FOR DISNEY'S CONTEMPORARY RESORT



## GRAND REPUBLIC FOYER

2200 - Grand Republic Foyer Header Graphic	\$1,945
2201 through 2204 – Column Wraps, each	\$2,000

*Note: Availability of locations depicted is not guaranteed due to possible shared use of the meeting space by other groups. Please check with your Disney Representative for availability.*

[◀ BACK TO MAP](#)

**PRICING IS VALID THROUGH SEPTEMBER 30, 2017**

**FOR MORE INFORMATION, CONTACT YOUR DISNEY REPRESENTATIVE.**



# SIGNAGE OPPORTUNITIES FOR DISNEY'S CONTEMPORARY RESORT



## GRAND REPUBLIC FOYER

2208 - Grand Republic Ballroom Header Graphic, Ballroom B

\$860

*More header locations available in this foyer.*

*Note: Availability of locations depicted is not guaranteed due to possible shared use of the meeting space by other groups. Please check with your Disney Representative for availability.*

[◀ BACK TO MAP](#)

**PRICING IS VALID THROUGH SEPTEMBER 30, 2017**

**FOR MORE INFORMATION, CONTACT YOUR DISNEY REPRESENTATIVE.**



## SIGNAGE OPPORTUNITIES FOR DISNEY'S CONTEMPORARY RESORT



### GRAND REPUBLIC FOYER

2209 - Grand Republic Ballroom Header Graphic, Ballroom B/C

\$860

*More header locations available in this foyer.*

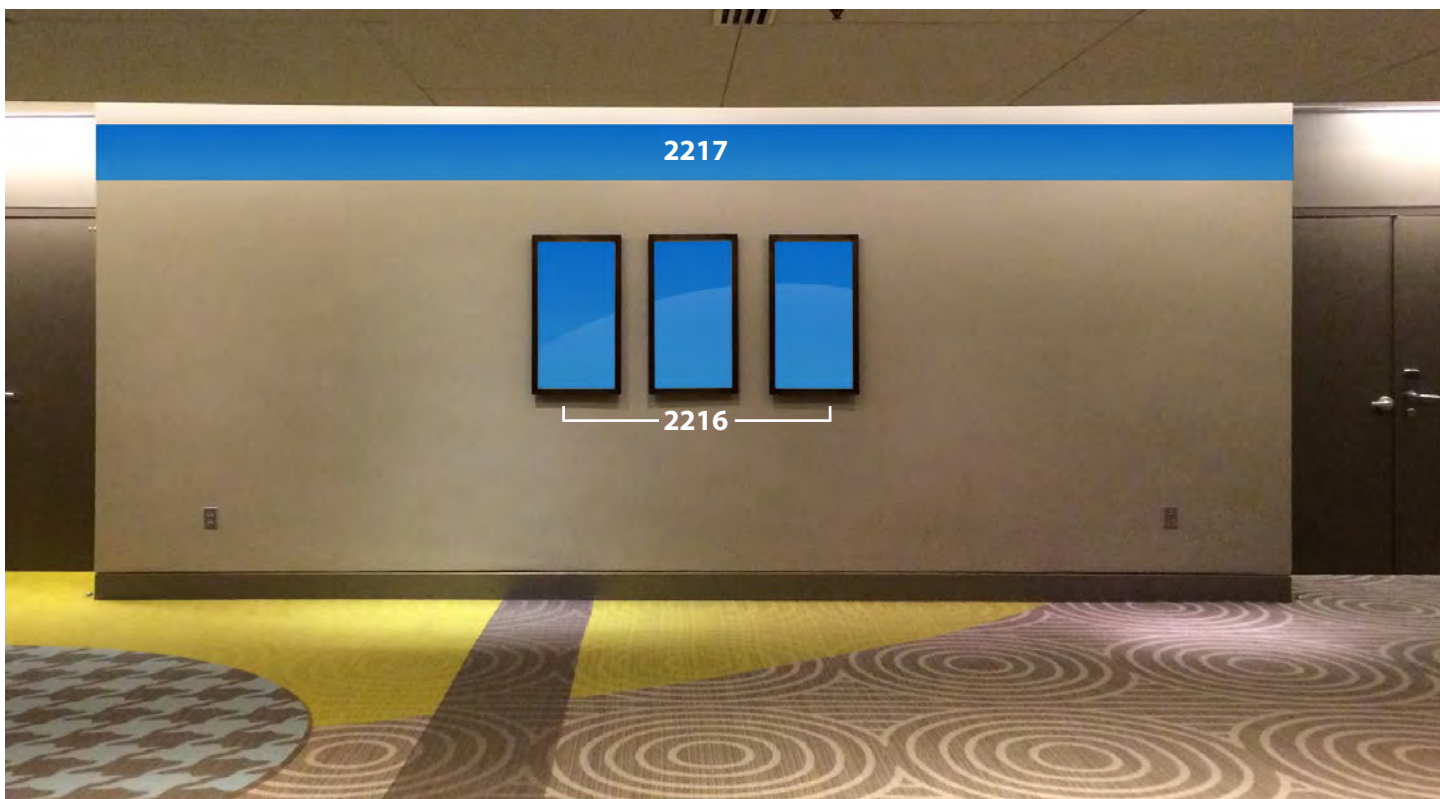
*Note: Availability of locations depicted is not guaranteed due to possible shared use of the meeting space by other groups. Please check with your Disney Representative for availability.*

[◀ BACK TO MAP](#)

**PRICING IS VALID THROUGH SEPTEMBER 30, 2017**

**FOR MORE INFORMATION, CONTACT YOUR DISNEY REPRESENTATIVE.**

## SIGNAGE OPPORTUNITIES FOR DISNEY'S CONTEMPORARY RESORT



### GRAND REPUBLIC FOYER

2216 - Atlantic Ballroom B, set of three (3) picture covers

\$335

2217 – Atlantic Ballroom Header Graphic, Ballroom B

\$770

*More header locations available in this foyer.*

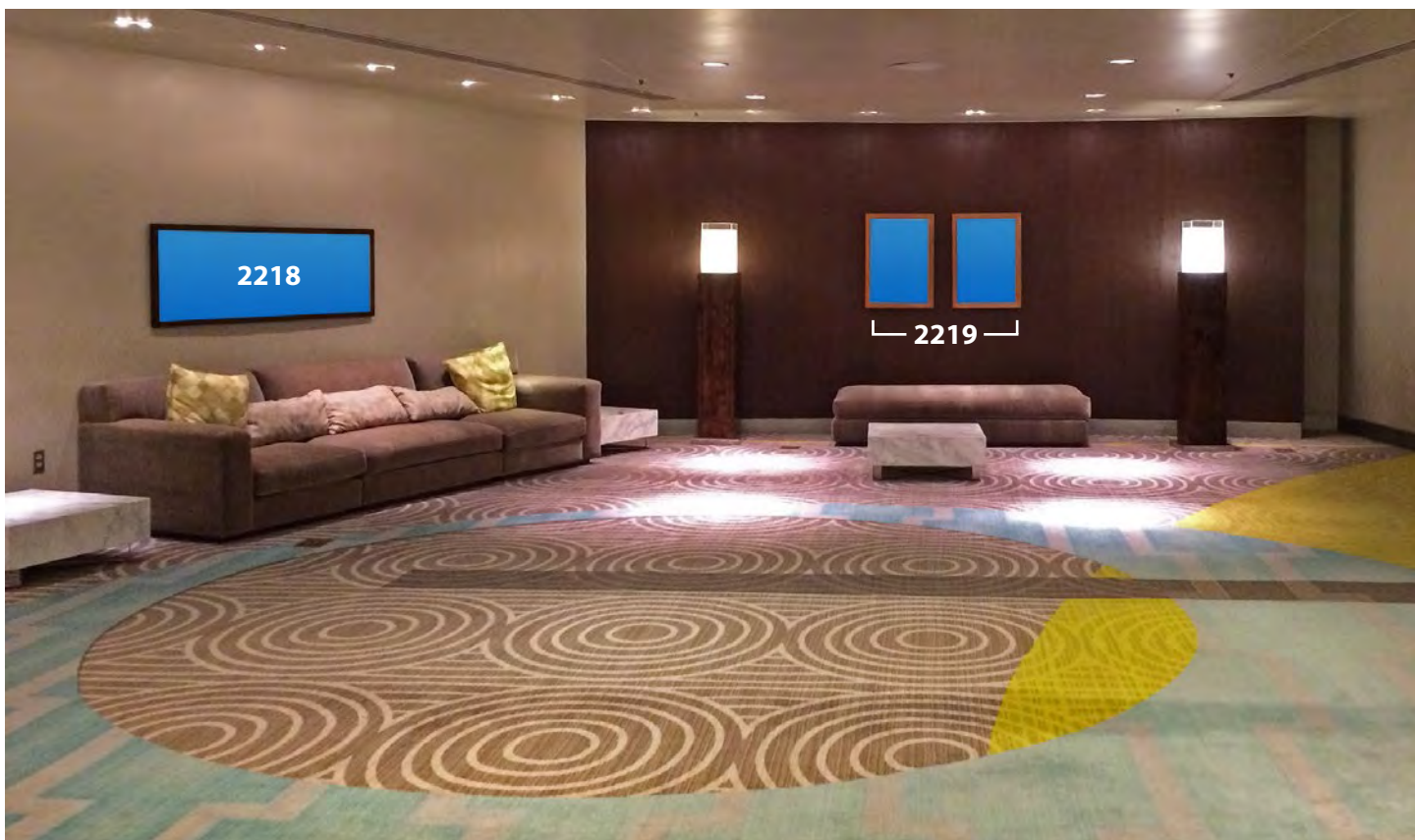
*Note: Availability of locations depicted is not guaranteed due to possible shared use of the meeting space by other groups. Please check with your Disney Representative for availability.*

[◀ BACK TO MAP](#)

**PRICING IS VALID THROUGH SEPTEMBER 30, 2017**

**FOR MORE INFORMATION, CONTACT YOUR DISNEY REPRESENTATIVE.**

## SIGNAGE OPPORTUNITIES FOR DISNEY'S CONTEMPORARY RESORT



### GRAND REPUBLIC FOYER

2218 - Grand Republic Foyer, long landscape picture cover

\$315

2219 – Set of two (3) portrait picture covers

\$335

*Note: Availability of locations depicted is not guaranteed due to possible shared use of the meeting space by other groups. Please check with your Disney Representative for availability.*

[◀ BACK TO MAP](#)

**PRICING IS VALID THROUGH SEPTEMBER 30, 2017**

**FOR MORE INFORMATION, CONTACT YOUR DISNEY REPRESENTATIVE.**



## SIGNAGE OPPORTUNITIES FOR DISNEY'S CONTEMPORARY RESORT



### BALLROOM OF THE AMERICAS FOYER

2100 - Ballroom of the Americas Foyer Header Graphic	\$1,265
2102 through 2105 - Column Fronts (Narrow surface), each	\$840
2106 through 2109 - Column Exterior Sides (Large surface), each	\$1,455
2110 through 2112 - Header Strips	\$1,400

*Note: Availability of locations depicted is not guaranteed due to possible shared use of the meeting space by other groups. Please check with your Disney Representative for availability.*

[◀ BACK TO MAP](#)

**PRICING IS VALID THROUGH SEPTEMBER 30, 2017**

**FOR MORE INFORMATION, CONTACT YOUR DISNEY REPRESENTATIVE.**